



ILULISSAT AVANNAATA ILLOQARFITTUT INERIARTORNERA

NUNAMINERTAT INERIARTORTITSIFFISSATUT PERIARFISSAT
NUUAARSUMMI AAMMA KANGERLUARSUMMI

URBAN DEVELOPMENT - ILULISSAT NORD

NORDRE NÆS AND KANGERLUARSUK / BREDE BAY SITES



Avannaata
Kommunia



**ILULISSAT AVANNAATA ILLOQARFITTUT
INERIARTORNERA**

**NUNAMINERTAT INERIARTORTITSIFFISSATUT PERIARFISSAT
NUUAARSUMMI AAMMA KANGERLUARSUMM**

URBAN DEVELOPMENT - ILULISSAT NORD
NORDRE NÆS AND KANGERLUARSUK / BREDE BAY SITES



IMARISAA | CONTENTS

AALLAQQAASIUT INTRODUCTION	6
ILLOQARFIUP OQALUTTUARISAANIKKUT INERIARTORNERA THE CITY'S HISTORICAL DEVELOPMENT	8
ILULISSAT ILLOQARFIAT ULLUMIKKUT ILULISSAT CITY TODAY	10
OQIMAAQATIGIISUMIK INERIARTORNEQ BALANCING DEVELOPMENTS	12
KULTURIMUT SUNNGIFFIMMULLU SULINIUTIT CULTURAL AND LEISURE PROJECTS	14
ILLOQARFIUP ALLIARTORNERA URBAN DEVELOPMENT	16
ATTAVIIT CONSTRAINTS	18
ILUSILERSUINERMUT PILERSAARUT STRUCTURAL PLAN	20
Nunatatigut piukkunnaatilit Landscape potentials	20
Ineriartortitsiffissatut periarfissat Development potentials	22
MERSUAQ WATER LAKE	32
MITTARFIMMIIT NUTAAMIIT KILLEQARFIIT RESTRICTIONS FROM NEW AIRPORT	37
Nipiliornermut tunngasut noise conditions	37
Qutsissutsikkut killit height restriction	41
KANGERLUARSUK BREDE BAY	42
ASSIGIINGISSUTSIT AAMMA ILLOQARFIUP ILAI TYPOLOGY AND URBAN CREATIONS	44
PIVIUSUNNGORTITSINISSAMIK PIUMASAQAATIT PRECONDITIONS FOR REALIZATION	48
TAPILIUSSAT – NUNAMINERTAT NAATSORSRNEQARNERI APPENDIX – DETERMINATION OF AREA	52

AALLAQQASIUT

Ilulissat ullumikkut nunatsinni takornariartarfiit siuttoreerpaat, illoqarfullu avannaani nutaamik mittarfissuarmik kiisalu takusaaffiusinnaasumik, Isfjordcenter-i, Ilulissat kangerluata immikkuullarissup eqqaani inissisimasumik aammalumi nunarsuarmi pitsaanerpaat ilagisaattut ilusilersorneqarsimasumik pilersitsisoqarnissaanik pilersaaruteqartoqarmat, siunissamat isumalluarneq angivoq – ineriartornerullu taassuma piviusunngortinnissaanut angusaqarusussuseqarneq piumassuseqarnerlu aamma taamaapput.

Uani quppersakkami siunertaasooq taamaalilluni tassaavoq, ineriartortitsinissamat periarfissat immikkuullarissut taakku qanoq iliorluni pilersaarusiorneqassanersut atorneqassanersullu pillugit oqallinnissamat sinaakkusiornissaq.

Tunngaviusumik Imersuup aamma Nuugaarsuup eqqaani Ilulissat avannaatungaani illoqarfiup immikkoortortassaaq nutaaoq. Tassunga ilanngullugu Kangerluarsummi mittarfiup nutaassap qanittuani nutaamik talittarfimmik inuusutissarsiorullu inissaannik pilersitsinissamik periarfissaqarpoq.

Siunissaq ungasinnerusooq isigalugu illoqarfik Kangerluarsuup avannaatungaani ineriartortinneqarnissamat periarfissaqarpoq.

Quppernemi tulluuttuni illoqarfiup immikkoortortassaanut nutaamut aaqqissuussaannikkut pilersaarut saqqummiunneqarpoq – tassa ima paasillugu, illoqarfiup immikkoortortassaaq qanoq ilusilersorneqarsinnaanersooq qanorlu Ilulissat illoqarfiata Sermermiunut kujataanut atatillugu nunaqarfimmut avannamut Oqaatsunut qanoq ineriartortinneqarsinnaanera pillugu siunnersuut.

Palle Jerimiassen, borgmester

Avannaata Kommunia



Avannaata
Kommunia

INTRODUCTION

Ilulissat is already Greenland's leading tourist destination, and with the planned establishment of a new transatlantic airport north of the city as well as a visitor's centre, the Icefjord Centre, located at the unique Icefjord and designed with a world-class architecture, expectations for the future are high – and so are the ambitions and the will to implement this development.

The purpose of this booklet is thus to set the framework for a discussion on how these unique development potentials can be approached and exploited.

The overall perspective is the development of a new district north of Ilulissat around Imersuaq / Water Lake and on Nuugaarsuk / Nordre Næs. In addition, it is possible to establish a new port and commercial area at Kangerluarsuk / Brede Bay close to the future airport.

In the longer term, the city could potentially develop on land north of Kangerluarsuk / Brede Bay.

On the following pages, proposals have been made for a structural plan for the new district – that is, overall proposals on how the district can be designed and part of a strategy for how Ilulissat city can develop into a group of experiences from the Icefjord in the south to the village of Oqaatsut to the north.

Palle Jerimiassen, major

Avannaata Kommunia

1. Iilmanap pulammagiaani takornarissanut illuaqqat. Ass. Merete Gadager Jørgensen - 2. Pisiniarfik niuvertorutsillu illua iluarsaatat (Realdania). Ass. Merete Gadager Jørgensen - 3. Kangia. Ass. Hanne Holm Andersen - 4. Sermermiut qoorua Kangia pillugu Ilisimatusar-fissap kujatinnuani. Ass. Hanne Holm Andersen - 5. Ilulissat illoqarfiat. Ass. Hanne Holm Andersen - 6. Qamutit. Ass. Hanne Holm Andersen - 7. Oqaatsuni talittarfik. Ass. Hanne Holm Andersen - 8. Kangia pillugu Ilisimatusarfik, takusassiarinnittoq Dorthe Mandrup Arkitekter - 9. Aurora Center, Arsarnernik Alapernaarsuisarfik. Suliap takuneqarsinnaanera MAP Architects.

1. Tourist lodges at the entry to Iilmanaq. Photo Merete Gadager Jørgensen - 2. Restored (Realdania) shop and manager's residence. Photo Merete Gadager Jørgensen - 3. Icefjord. Photo Hanne Holm Andersen - 4. Sermermiut valley just south of the Icefjord Centre. Photo Hanne Holm Andersen - 5. Ilulissat city. Photo Hanne Holm Andersen - 6. Dog sled. Photo Hanne Holm Andersen - 7. The port of Oqaatsut. Photo Hanne Holm Andersen - 8. Icefjord Centre, Visualization Dorthe Mandrup Architects - 9. Aurora Centre, Northern Lights Observatory. Visualization MAP Architects.



5



6



7

OQAATSUT



8



9

ILULISSAT



3



4



2

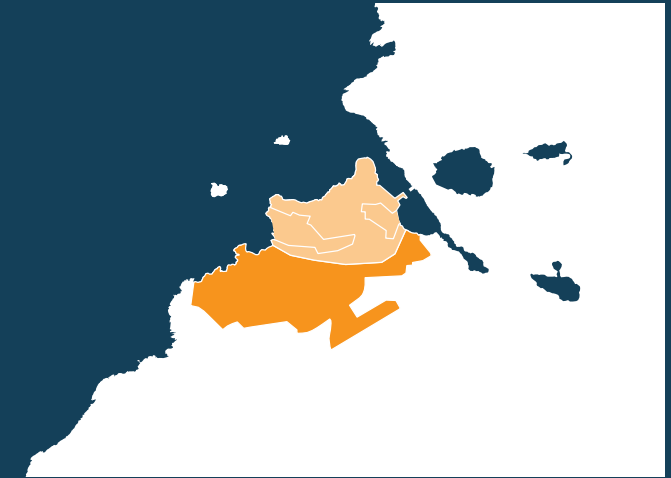
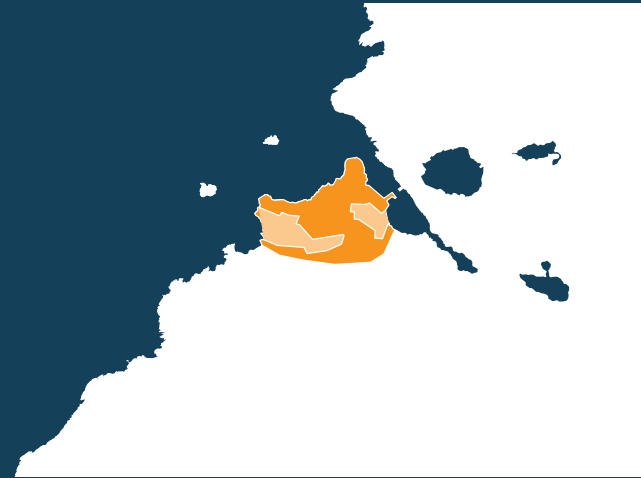
ILIMANAQ



1

ILLOQARFIUP OQALUTTUARISAANIKKUT INERIARTORNERA

THE CITY'S HISTORICAL DEVELOPMENT



ILLOQARFIUP PILERFIA

Ukiut 4.000-it sinnerlugit Ilulissat eqqaa Sermermiut eqqaani inoqarsimavoq, illoqarfillu ullumikkut Ilulissatut ilisimasarput 1700-kkut aallartilarnernanni 1741-mi nunaqarfittut tunngavilerneqarpoq.

Niuertoqarfik Jacobshavn niuertumit Jacob Severinimit 1741-mi tunngavilerneqarpoq taannalu malillugu qallunaatut atserneqarluni. Niuertoqarfik piffissami 1900-kkut aallartinnaasaat tikillugu arriitsumik alliarpoq, tassani piupput Niuertoqarfiup Allaffissorfiullu talittarfiup kangianiittut aammalu Ajoqersuiartortitat illuutaat Qeqertarsuup Kangiata kimmut oqaluffiup eqqaaniittut.

ORIGINS OF THE CITY

For more than 4,000 years, the area around Ilulissat has been populated with settlements around Sermermiut.

The colony Jacobshavn was founded in 1741 by the merchant Jacob Severin and got its Danish name after him. The colony grew slowly in the period up to the 1900s, when it consisted of the houses of Commerce and Administration around the port in the east and mission buildings around the church out to Disko bay in the west.

1950 SIOQQULLUGU

Illuliat kingulliit aqquserngup Qoornunnguamiittip eqqaanut siammarsimapput qaqqarlu itivillugu nunaqarfiusimasunut marluusimasunut siaruarsimallutik.

Piffissami tamatumani niuertoqarfimmut nunaqarfiit pingasut Qeqertarsuup Tunuanut Sermermiut niuertoqarfiullu akornanni atasimapput. Ajoqersuiartortitanut qaninnerpaavoq Pitoqqik, qoorortami illoqarfiup piusup, Illumiut, kujammut kangianut, kiisalu Kingittoq Sermermiut nuuanut ungasinnermut ippit (Sermermiut eqqaanni).

1940'kkut naalerneranni Niuertoqarfiup Illoqarfiup pisiniarfeqarfiata sananera aallartippaa, taamaasilluni maanna illoqarfiup qitia tunngavilerneqarpoq.

BEFORE 1950

The later settlement has grown around the Qoornunnguaq trail and stretched up over the mountain and between the two original settlements.

At this time, the colony belonged to 3 settlements on the coast facing Disko bay between the Icefjord and the colony. Closest to the mission was Pitoqqik, in the valley immediately southwest of the existing town, Illumiut, and finally Kingittoq on the outer point facing the Icefjord (at Sermermiut).

In the late 1940s, the commerce started up construction of the development around the shopping centre, laying the foundations for the current urban centre

1950 – 1970

Taamani illut pitsaanngitsut piffissamullu naleqqutinngitsut qisuariarfigalugit piffissami 1950'ikkut tungaannut 1950'imilli 1960'ikkut angullugit taamani illoqarfiup piusup kujammut kitaatungaani nutaanik illuliortoqarpoq.

Ilaatigut peqqissutsikkut pissutsit pitsaanerulersimasut kingunerisaannik innuttaasut amerlassusaat 1970'ip tungaanut annertuumik qaffappoq, illoqarfillu suli anginerulerluni – maanna kujammut soorlu assersuutigalugu Alanngukasiup Qaava aamma Kuunnguarsuup Qaavanut.

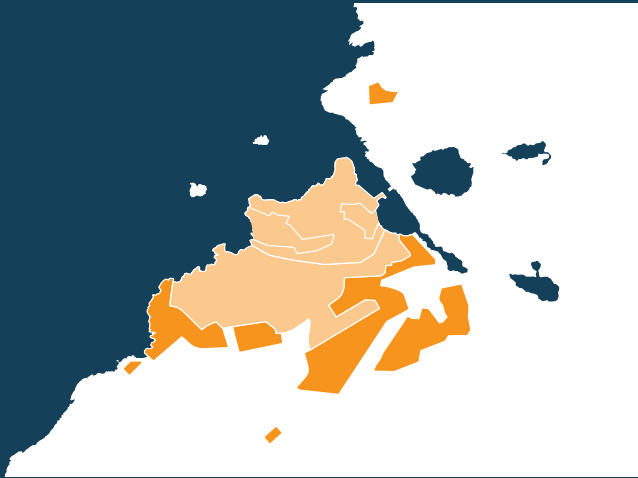
Jørgen Guldagerip Aqqutaata eqqaani blokiliorneq tassaaavoq iluarsaartussatut siullertut assersuut, tamanna illuliornissamut inissaqartitsilissaaq, nutaamik allatullu angissuseqarluni (1968-ip missaani) aallartinneqarpoq).

1950 - 1970

In response to the poor and outdated standard of housing in the period up to 1950, a number of new type houses were built in the south-west of the then existing city from the 1950s to the 1960s.

Among other things, as a result of the improved health conditions, the population increased significantly in the period up to about 1970, and the city grew further – now in a southerly direction around, for example, the roads of Alanngukasiup Qaava and Kuunnguarsuup Qaava.

The housing blocks around Jørgen Guldagerip Aqutaa is one of the first examples of a redevelopment to make way for a building built on a new and completely different larger scale (circa 1968).



1970 – 1990

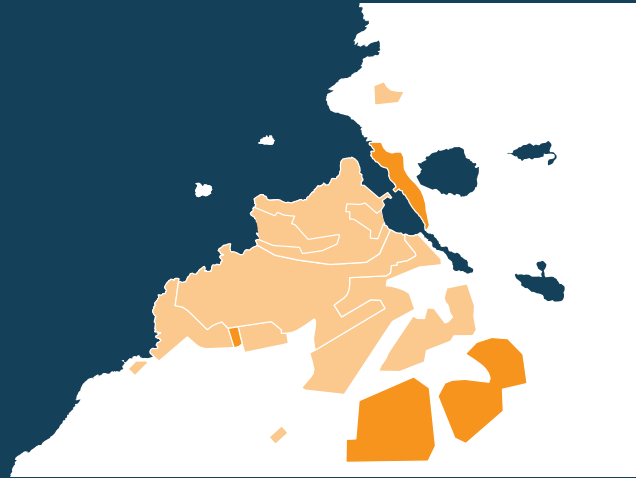
Inissianik pisariartitsineq piffissami alliaartorsinnaartoq tamatuma Kingorna illuliomerunermik kinguneqarpoq, ukiunilu 1965/70-miit 1990-imut taamaasilluni inissiat qaninnerusut uigulikutsut quleriaallu sananeqarput. Taamaasilluni assersuutigalugu Henning Larsenip inissianik quleriiaanik "Blokkit qasersut" (1972-ip missaani), kiisalu Atersuit eqqaanni (1980-ip missaani) aammalu Nammarfik (1986-ip missaani) illoqarfiup kangimut kujammut immikkoortortaani.

1983-ip aallartinenrani umiarsualiviup annaani ataatsimoortumik sanaartorneq siulleq sananeqarpoq – Hotel Arctic Sermermiut Saavata Ikkarnersaanut isikkivilik. Hoteli mittarfimmut nutaamut atatillugu illoqarfiup avannaani ukioq taanna ammarneqartoq sananeqarpoq.

1970 - 1990

The ever-increasing housing demand in the period after that was met with an increase in construction activity, and in the years 1965/70 to 1990, new examples of closer housing construction were built in the form of row houses and multi-storey blocks. For example, Henning Larsen's multi-storey blocks "The Grey Blocks" (circa 1972) in the southern part of the city around Mathias Storchip Aqqutaa, as well as the blocks around Atersuit (circa 1980) and Nammarfik (circa 1986) in the southeast of the city.

At the beginning of 1983, the first total settlement was built north of the harbour – Hotel Arctic overlooking the Iceberg Bank. The hotel was built as a direct consequence of the new airport north of the city, which was inaugurated the same year.



1990 – 2010

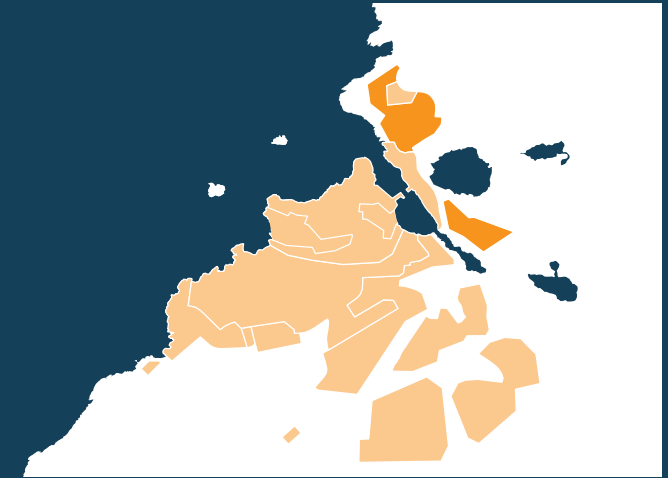
Piffissami 1990'ikkunni inissianik sanaartorneq illoqarfiup immikkoortuata kujammut kangianut eqiterunneqarpoq "nergallaap" Qoororsuup Aqqutaanut. Tassunga ilanngullugu umiarsualiviup avannaatungaa sanaartortoqalerpoq.

Sanaartukkat tassaanerupput illut uigulikutsut, quleriiaat aamma ilaqutariit illui ataasiakkaat nunaminertat ataatsimut atorneqarsinnaasut imaluunniit qatsissumut inissinneqarsimasut, sanaartukkat pukkitsut illoqarfimmut immamullu isikkivililit.

1990 - 2010

The house building in the period 1990 -2010 was concentrated in the south-eastern part of the city around the traversing "ring road", Qoororsuup Aqqutaa. In addition, the building north of the harbour was started.

The buildings consist primarily of low row houses, multi-storey blocks and single-family houses around common open spaces or high-altitude, low settlements overlooking the city and the sea.



2010-P KINGORNA

UNESCO-p kingornussaqaarfiani Sermermiuniittumi inissiigallarnerup kingunerisaanik illoqarfiup kujammut sanaartorfiginissaanut periarfissat nunguliivipput. Inissiigallarneq illoqarfiup piusup killerpiaaniippoq siunertaraalu qulakkiissallugu, Sermermiut eqqaanni nunap nunatut sanaartorfusimannngitsutut isikkoqarnissaa, taamaattumillu sanaartornissamut periarfissat taamaallat umiarsualiviup avannaatungaaniipput.

Tassani assersuutit siulliit tassaapput ineqarfiit Nuussuattaap Aqqutaani aamma Mittarfimmut Aqqutip eqqaaniittut, Hotel Arcticip kujammut kangiani

AFTER 2010

As a result of the zone of buffers around the UNESCO Icefjord area, the expansion opportunities south of the city have gradually been exhausted. The buffer zone borders the existing town and aims to ensure that the landscape around the Icefjord appears as untouched landscape without development, and therefore there are only expansion opportunities left north of the harbour.

These are the first examples of residential areas around Nuussuataap Aqqutaa and Mittarfimmut Aqqutaa immediately southeast of Hotel Arctic.

ILULISSAT ILLOQARFIAT ULLUMIKKUT | ILULISSAT CITY TODAY

Iulissat 2017-imi inoqutigiinnut 1.736-nut agguarsimasunik 4.555-inik innuttaqarluni Avannaata Kommuniari illoqarfiit anginersaraat. Taakkunannga 40%-it Namminersorlutik Oqartussat illuutigaat inoqutigiinnilu agguaqatigiissillugu inuit 2,6-iupput.

Iloqarfiup nutaannginnersaa illoqarfiup qeqqata, talittarfiup napparsimaviullu avannaatungaaniippoq. Piffissap ingerlanerani illoqarfik sumut tamanut annertuumik allisimavoq. Kangimut - Kangianut isikkiveqarluni – illoqarfiup immikkoortortaa angisooq nutaannginnerulaarpoq, illoqarfimmilu pingaarnernut ilaasut, soorlu pisiniarfiit, atuarfiit, pisortat suliffeqarfiutai, inuussutisarsiornermut tunngasut illoqarfiup qeqqata kujammut nanginneraniippoq. Iloqarfik aamma avannamut, Hotel Arcticip mittarfiullu Sermermiut eqqaanni kujammut qulimiguulinnut mittarfianik taarsoq, ineriartorsimavoq. Mittarfik illoqarfiup qeqqaniit 3,5 km missaannik ungasissuseqarpoq.

Qimmiliviit qimussit illernginut sermersuup tungaanukartunut attuumassutilit illoqarfiup immikkut ittumik ilisarnaatigai. Qimmiliviit illut akorngini ammasunik qorsooqqissunik angisuunik pilersitsisarput, taakkulu inissanitsitsisarput illoqarfimmullu isikkiveqartitsillutik.

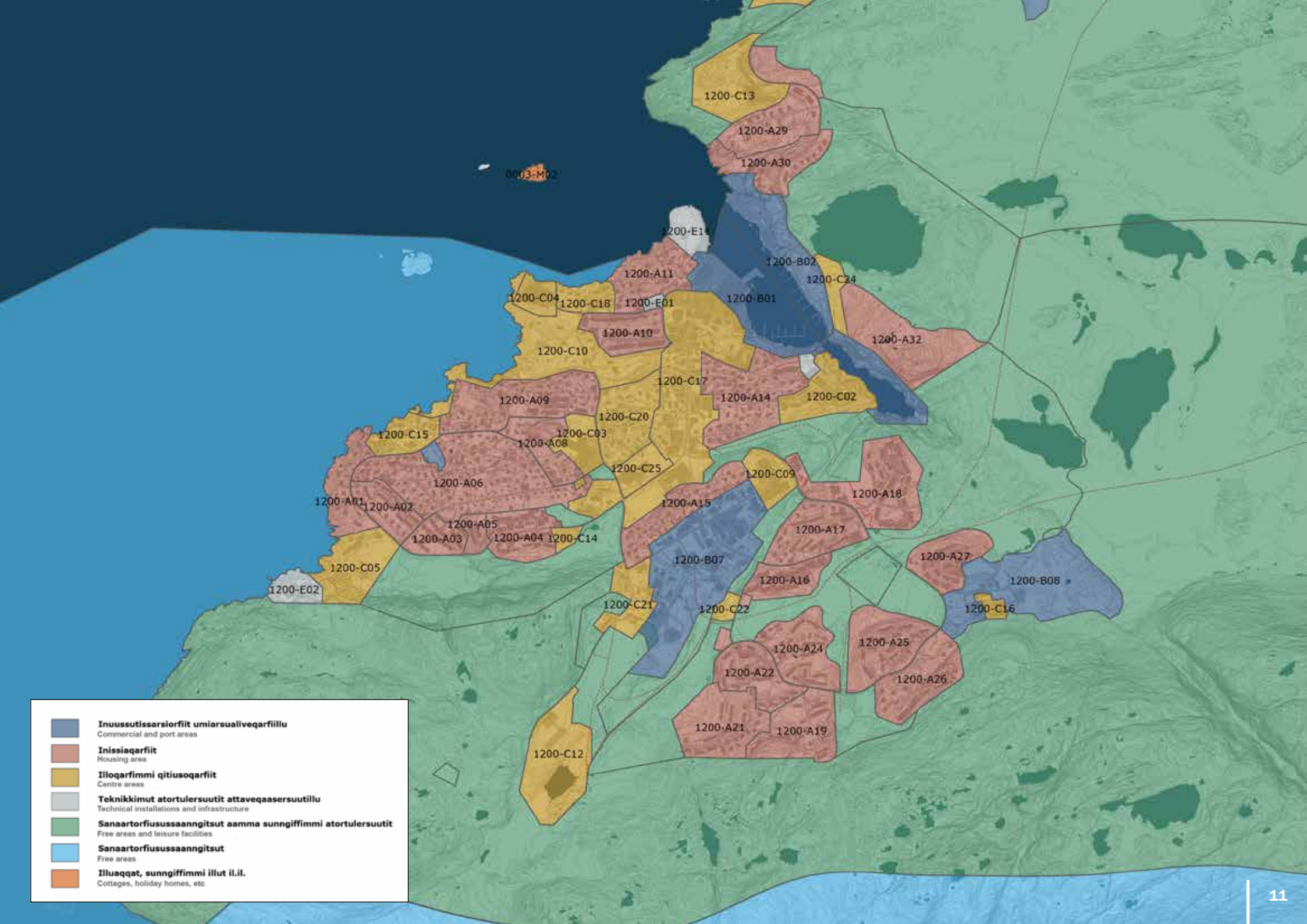
Pilersaarutit Avannaata Kommuniata kommunimut pilersaarutaani illoqarfiup immikkoortuinut, nunaqarfinnut nunamullu ammasumut atuuttuni pilersaaruteqarpoq. Aalajangersakkat tamanut tunngasuupput immikkoortunullu assigiinngitsunut mianerinningatik. Taassuma saniatigut kommunip illoqarfii, nunaqarfii aamma nunatai ammasut tamarmik aalajangersimasutigut immikkut ittutigut immikkoortumi pineqartumi sumut atussanersut allasimapput. Kommunip nunaminertanik sanaartornissamullu akuersissuteqartarneranut aalajangersakkat tunngaviusut immikkoortunut ataasiakkaat tunngaviusumik aalajangersakkanut tunngaviupput. Immikkoortuit iluini tamani aammattaq aalajangersakkanik immikkut ittuliortoqarsinnaavoq, taakkulu ima ipput, piffimmut aalajangersimasumut sanaarfissaliortoqarluni, attaveqatigiissusiortoqarluni, qimmiliviliortoqarluni il.il. Nunap assigani eqqaaniittumi Iulissat immikkoortut piusut takuneqarsinnaapput.

Iulissat is Avannaata Kommunia's largest city with 4,555 inhabitants in 2017, spread over 1,736 households. Of these, 40% are self-governing households and there is an average of 2.6 people per household.

The oldest town districts are located to the north in connection with the city centre, the harbour and the hospital. Over time, the city has grown significantly in all directions. To the west – overlooking the Icefjord – the large, slightly older, residential areas are located, while many of the primary urban functions such as shops, schools, institutions, business areas are located in the south extension of the city centre. The city has also developed in a northerly direction with Hotel Arctic and the airport, which has replaced the old heliport at Sermermiut in the south. The airport is located about 3.5 km north of the city centre.

Especially characteristic of the city are large transverse groups of dog-keeping areas associated with the sledge track, which leads into the inland ice. The dog-keeping areas create large green, open spaces between the built-up areas and these help create air and a look into the cityscape.

As planned, the municipal plan for Avannaata Kommunia lays down general provisions applicable to all areas of the municipality in the city, village and open land. The provisions are general and do not consider the local conditions in the sub-areas. In addition, all the municipality's towns, settlements and open land are divided into sub-areas, which through a number of general provisions describe what use may specifically take place in the relevant sub-area. The general provisions for each sub-area are the basis for the municipality's issuance of land allocations and building permits. In addition, detailed provisions can be drawn up within each sub-area, which means that within a specific sub-area, for example, construction fields, infrastructure, dog-keeping places, etc. are laid out. The map next to it shows the existing sub-areas of Iulissat.



- Inuussutissarsiorfiit umiarsualiveqarfiillu**
Commercial and port areas
- Inissiaqarfiit**
Housing area
- Illoqarfimmi qitiusoqarfiit**
Centre areas
- Teknikkimut atortulersuutit attaveqaasersuutillu**
Technical installations and infrastructure
- Sanaartorfiusussaannngitsut aamma sunngiffimmi atortulersuutit**
Free areas and leisure facilities
- Sanaartorfiusussaannngitsut**
Free areas
- Illuaqqat, sunngiffimmi illut il.il.**
Cottages, holiday homes, etc

OQIMAAQATIGIISSUTMIK INERIARTORNEQ

BALANCING DEVELOPMENTS

Ilulissani mittarfiup tallineqarnissaata ilagisaatut illoqarfittut siunertanut immikkoortunik nutaanik atugassiinissaq pisariaqartinneqarpoq taamaaliornikkut siunissamut ungasinnerusumut Ilulissat illoqarfiata pilersaaruseriorfiginissaa illoqarfittullu alliarternissaa qulakkeerneqassallutik. Taamaattumik sulineq una aallartinneqarsimavoq, taamaalilluni illoqarfimmi pigineqartut unammilligassat periarfissallu isummerfigineqarsinnaaniassammata.

Mittarfiup tallineqarnerata ilutigisaanik, illoqarfik assigiinngitsutigut assut allisussaassaaq; nunaminertaqarnikkut, innuttaqarnikkut, aningaasaqarnikkut, assigiinngiaarnikkut il.il.

Anguniagaasoq tassaavoq oqimaaqatigiissumik illoqarfiup alliarternissaa. Oqimaaqatigiissoq assigiinngitsorujussuarmik paasineqarsinnaavoq ataqatigiisitsinerpassuartigullu takuneqarsinnaalluni. Oqimaaqatigiinneq assersuutigalugu inooriaatsitsinnut, angallaseriaatsitsinnut, najugaqariaatsitsinnut, peqatigeeriaatsitsinnut, akuleruteriaatsitsinnut ilaavoq. Oqimaaqatigiinneq taamaalilluni Ilulissat alliarternannut pingaarnertut oqariartaatsitut isigineqarsinnaavoq taannalu suni tamani, illumit ataatsimiit illoqarfimmut pilersaarummut pingaarnermut, ilaaqqittartussaalluni.

Oqimaaqatigiissumik illoqarfiup alliarterneranik oqarnermut aamma ilaavoq, Ilulissani kinaassutsimik paasinnittarnermut aamma piviususermut ilumoortuunissaq. Tassa inissiaqarfiit, qitiusoqarfiit aamma inuussutissarsiorfeqarfiit nutaaviusut pilersinneqartussaapput, taamaattumillu pingaarteqartumik isummerfigineqartariaqarpoq, illoqarfik sunik neqerooruteqarsinnaassava aamma soq. Pisumi tamatumani, Ilulissat illoqarfiata ilisarnaatigeriigai aamma pitsaasumik inuuneqarnermik pilersitsisusut aallutissallugit aamma pingaartuuvog.

Illoqarfiup immikkoortortaa nutaaq Nuugaarsuk qitiusumik atuuffinnik, inissianik, inuussutissarsiorfut suliffiannik kiisalu nunamik qorsuusumik imaqaanngitsumik attaveqaatinillu imaqassaaq. Aammattaaq attaveqaqatigiissutit ineriartortinneqassapput, taamaasilluni nunaminertami kiisalu illoqarfiup sinneranut pitsaasunik attaveqalersillugu.

Tassungaa aamma ilaalluni anguniagaavoq Ilulissani innuttaasunut, tikeraartunut takomarissanullu iluaqutaasussamik kujataatungaaniit avannaatungaanut piviusunik misigisaqarnissamut ataqatigiissusiinissaq. Ilulissat Kangianiit, Sermermiuniit aamma kujammut Kangiata Illorsuanut, Ilulissat illoqarfia aqqusaarlugu misigisassarpasuit illoqarfiup nutaap immikkoortuanut mittarfimmullu.

Mittarfiup avannaatungaani nutaamik umiarsualiviliornissaq periarfissaavoq, taannattaaq aamma mittarfiup aqqutaanut nutaamut atassuserneqarsinnaavoq. Nunami illuaqqanik aasarsiorarfiorfiusinnaasumut nunaqarfillu Oqaatsut angullugu mittarfimmut aqqu avannamut sulii nanginneqarsinnaavoq, taamaasilluni aqqusineq Ilulissanut qaninnerulersillugu periarfissallu nutaat illoqarfimmut annertunerusumik attuumassuteqalernermik kinguneqartut pilersillugit.

With the forthcoming airport expansion in Ilulissat, there is a need to develop new areas for urban purposes, thereby ensuring long-term planning and urban development of Ilulissat. This work has therefore been initiated to address the challenges, opportunities and potentials of the city.

With the airport expansion, the city will grow significantly on several levels: in terms of area, population, economy, diversity, etc.

The aim is to create balanced urban development. Balance must be understood at many levels and must be seen in many contexts. Balance can, for example, be part of the way we live, in the way we move, in the way we interact with each other, in the way we mix, etc. Balance must therefore be seen as an overall approach to the development of Ilulissat and must recur at all scales from the individual building to the large urban plan.

With a balanced urban development, it is also thought to be true to the identity and authenticity of Ilulissat. By creating completely new residential, centre and business areas, it is important to achieve what the city should be able to do and why. In this process, it is important also to focus on what already characterizes Ilulissat and what creates the good life.

The new district at Nuugaarsuk / Nordre Næs will accommodate centre functions, housing, business activities and secure free-kept, green areas and connections, respectively. In addition, the infrastructure must be developed so that good connections are achieved both in the areas internally and in relation to the rest of the city.

In addition, the aim is to create a coherent group from south to north of authentic experiences for the benefit of both Ilulissat's citizens and guests and tourists. From the Icefjord, Sermermiut and the Icefjord Centre in the south, through Ilulissat city's manifold experiences, to the new district and the airport.

North of the airport, it is possible to establish a new port area, which will also be connected to the new airport road. The airport road can be continued further north through a landscaped unique holiday home area and right up to the village of Oqaatsut, which could thus be linked closer to Ilulissat and create completely new opportunities for increased interaction with the city.



-  **Illoqarfiup killeqarfia**
City border
-  **Imermik pilersuinermi mianerisassatut killeqarfik**
Drinking water restricted zone
-  **UNESCO-p nunarsuarmioqatigiinnut kingornussiaanut illoqarfimmuq qanittumi sanaartorfiqqusaanngitsoq**
Urban buffer zone for UNESCO World Heritage Site
-  **UNESCO-p nunarsuarmioqatigiinnut kingornussiaata killeqarfia**
Demarcation of UNESCO World Heritage Site
-  **Qimussit illelmgil**
Sledge tracks
-  **Qimussinut aqqutikoq**
Former sledge tracks
-  **Siunissami illoqarfiup alliaortorfissaa**
Future urban development area
-  **Siunissami umiarsualiveqarfittut ineriartortitassaaq**
Future port development area
-  **Siunissamut takorluugassiaq – illoqarfiup ineriartorfissaa**
Future perspective area - urban development
-  **Siunissamut takorluugassiaq – umiarsualiveqarfiup ineriartorfissaa**
Future perspective area - port development
-  **Siunissami angallassiivit suminnissaat**
Future transport trace
-  **Aasarsiortarfiiit (pileraarusiorfigineqassapput)**
Holiday home area (to be detail planned)



KULTURIMUT SUNNGIFFIMMULLU SULINIUTIT

CULTURAL AND LEISURE PROJECTS

Ilulissani illoqarfiullu immikkoortuani nutaami innuttaasunut takornarissanullu iluaqutaasumik suliniutaasinnaasunut periarfissaqarpoq, taakkulu illoqarfimmut inuuffigisatut nukittorsataasinnaapput, illoqarfiup immikkoortuunik nutaanik aallartitsinnaapput takornariaqarnermilu periarfissanik nutaanik piersitsillutik.

In Ilulissat and the new district, the potential for a number of projects benefits both citizens and tourists, who can help strengthen the city as a habitat, kick-start new neighbourhoods and add new tourism potential.



UMIARSUIT TAKORNARIARTAATIT

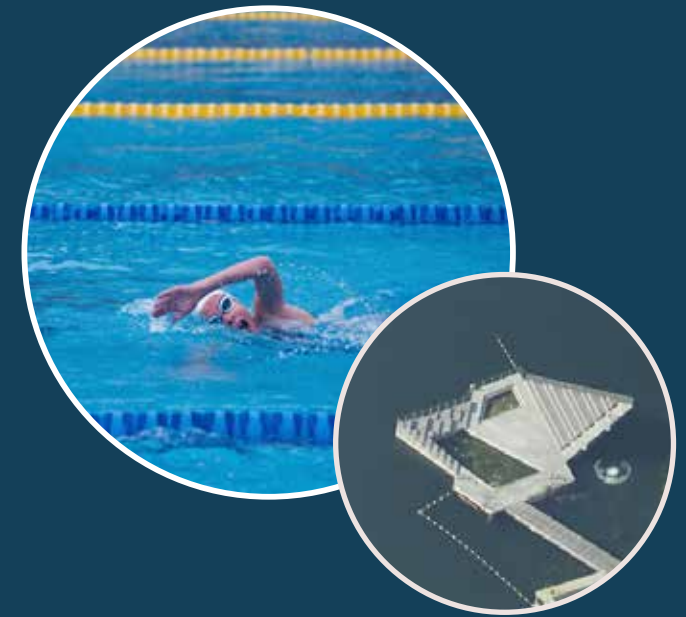
Ilulissani umiarsualivik piusoq ullumikkut piusoq umiarsuit takornariartaatit tikikkaangata tattoquteqqasarpoq.

Umiarsuit takornariartaatit avatangiisinik sunniisarnerat, soorlu nipi, silaannaq aamma annertunerusumik sullinneq kiisalu takussanik sunniinerit, soorlu isikkivimmik assigisaannillu assersuinerit peqqutigalugit inuussutissarsiorfennut naliginnaasumik inissinneqartarput. Kangerluarsuup eqqaani nutaami umiarsualivilornissamut atatillugu, umiarsuarnut takornariartaatinut tulaffissamik takornarissanut tikilluaqqusiffilimmik pilersitsinissamik periarfissaqarpoq.

CRUISE SHIPS

The existing port of Ilulissat is currently experiencing congestion when cruise ships dock in the city.

Cruise ships are usually placed in commercial areas due to environmental impacts such as noise, air emissions and increased traffic, as well as visual impact such as blocking views and the like. In connection with the construction of a new port area at Kangerluarsuk / Brede Bay, it is possible to make a port of call for cruise ships with welcome terminal.



NALUTTARFIK

Imersuup eqqaani siunissami naluttarfimmik silami aasaanerani ikaartarfimmi nalunnguaartarfimmi pilersitsinissamut periarfissaqarpoq, ukiukkulu ikaartarfik sikumi saarlisaariarnissamut aqqutit atorneqarsinnaavoq.

Naluttarfik illoqarfiup immikkoortuata nutaap eqqaani Imersuarni katersuuffinngorsinnaavoq nunaminertamilu inuit ataatsimoorfiannik aallarnisaataasinnaallunilu pilersitsinnaavoq. Tatsip kangiani inissilluni naluttarfik aammattaq mittarfimmut aqqut nutaaq atuarlugu tikikkuminarsinnaavoq. Naluttarfik illoqarfimmi innuttaasut sivisuumik kissaatigisimavaat, taamaattumik maanna ineriartortitsinermut pilersaarummut ilaavoq.

SWIMMING FACILITY

Around Imersuaq / Water Lake it is possible to establish a future swimming facility with outdoor jetty and sea bath in summer, and in winter the jetty can be used for access to ice skating.

The swimming facility can become a focal point in the new district around Imersuaq / Water Lake and help to kick-start and create life in the area. With a location east of the lake, the swimming facility will also have good access to the entire city via the new airport road. A swimming facility has also been a long-time wish of the citizens, which is why it is part of this development plan.



NUNAMINERTAQ OQALUTTUARISAANERMUT TUNNGASOQ

Kommunimi, ingammik nunaqarfinni illut nutaanngitsut inoqanngillat, imaluunniit allamik peqquteqartumik isaterneqagqajaallutik. Taakkua arlallit oqaluttuarisaanermi nalitupput, tamannalu peqqutigalugu ataannartinneqartariaqarlutik. Illut taakkua atatiinnarneqarnissaanni annertuumik periarfissaqarpoq, soorlu assersuutigalugu isateriarlugit nunami katersugaasimmut nuunneqarsinnaapput tikeraartunut immikkuullarissumik takussassiannorlugit. Ilutigitillugu kulturikkut oqaluttuarisaaneq nalitussuserlu atatinneqassapput, tamannalu ullumikkut tikeraartartut misigiartorlugu tikittarput.

Taamatut silami katersugaasivik Oqaatsunut inissinneqarsinnaakutsoorpoq, taamaasilluni nunaqarfik nutaamik pingaarutilimmillu peqalissaq, takornariaqarnermik inuussutissarsiornermik tapertaasumik.

HISTORICAL AREA

Around the municipality, especially in the settlements, older buildings are empty or are otherwise threatened with demolition. Several of these have a great cultural historical value and are thus worthy of preservation. There is great potential in preserving these buildings e.g., by dismantling and moving them to an assembled open-air museum as a unique attraction for visitors. At the same time, a unique cultural history and value is preserved, which visitors also come to experience today.

Such an open-air museum could usefully be located at Oqaatsut, so that the village is supplied with a new, important activity to support the tourist industry.



MULTIHALI

Ilulissani multihalimik pilersitsinikkut illoqarfimmi timersornikkut neqeroorutit sulii annertunerusumik nukittorsarneqarsinnaapput. Multihali illoqarfiup innuttaasa katersuuffigisinnaavaat, Ilulissanilu imaluunniit illoqarfiup immikkoortortaani nutaami inissinneqarsinnaalluni, taamaasilluni illoqarfimmut tamarmut aqqusinertigit pitsaasutigut atassuteqarluni. Ullumikkut illoqarfimmi pioreersumi Qoororsuup Aqqutaata Seersiullu Aqqutaata akornanni multihaliliorinissamik pilersaaruteqartoqareerpoq.

MULTI-PURPOSE HALL

By constructing a multi-purpose hall in Ilulissat, the opportunities for sports offers in the city can be further strengthened. A multi-purpose hall can become a gathering place for the city's inhabitants and can be located centrally in Ilulissat or in the new district and will thus be connected to the entire city via good road connections. Already today, a multi-purpose hall is planned for the existing city between Qoororsuup Aqq. and Seersiut Aqq.



SISORARTARFIK

Ilulissat Kalaallit Nunaanni takornarissanit tikinneqarnerpaasarpoq, aammalu innuttaasut takornarissallu illoqarfiup eqqaani sisorartarfik iluaqutigikutsoorsinnaavaat. Sisorartarik Kangerluarsummut inissinneqarsinnaavoq, tassani siunissami Oqaatsunut aqqusiniliassap sisorartarfiliarsinnaaneq qulakkiissavaa.

SKI RESORT

Ilulissat is Greenland's most visited tourist town, and both inhabitants of the city and tourists can enjoy a ski resort close to the city. This could be located in the area around Kangerluarsuk / Brede Bay, where a future road link to Oqaatsut can ensure access to the area.

ILLOQARFIUP ALLIARTORNERA | URBAN DEVELOPMENT

MITTARFIK NUTAAQ AAMMA AQQUSERNGIT

Siusinnerusukkut aamma maannakkut Avannaata Kommuniani Kommunalbestyrelsiusut tamarmiullutik pingaarnertut anguniagarisimavaat, kommunip angisuunik takornariartitsinikkut periarfissaarisaaanik annertusaanissaq patajaallisaanissarlut. Tassunga atatillugu Ilulissani, timmisartorsuarnik angisuunik miffigineqarnissamut piginnaasaqartumik, mittarfimmik nutaamik pilersitsinissamik pilersaarut aalajangiisuulluinnartumik inissisimalersussaavoq – nunap immikkoortuani takornariartartunuinnaangitsoq kisiannili aamma inuussutissarsiutinut periarfissanik nutaanik inerisartortitsinissamut taamaalilunilu sutigit tamatigit qaffariaateqarnermut. Ilulissat kangerluata immikkuullarissup UNESCO-p nunarsuarmioqatigiinnut kingornuussiaanut ilanngutsinneqarnerata aamma Isfjordcenter-ip 20210-imi ammarneqarnissaata ilutigisaanik, aallaavittut tunngavissat taamaalilluni pigineqalersimassapput, nunarsuarmit tamarmit takornariartartut amerliartortinnissaannut patajaallisaqaataasussat.

Mittarfik nutaaq, mittarfiup pioreersup avannaatunginnguani sananeqartussat pilersaarutaavoq. Mittarfimmik siunissami aqqusiniulersussap taamaalilluni Kangerluarsummi immikkoortumut sunniuteqarlartumik attaviliinissamut periarfissaq pilersissavaa.

Ullumikkut mittarfimmik aqqusineq, umiarsualivik piusok ikaarlugu ikaartarfikkooq. Ikaartarfik ullumikkut

angallannermut pioreersumut nerukillunilu aserfallassimavoq, ikaartarfiullu arlaatigut asserneqarneratigut mittarfimmik allanik aqutissaqartoqanngilaq.

Taamaattumik mittarfiup Ilulissallu akornanni aqqusineq nutaaq umiarsualiviup qinnguata kangiatigut

ILLOQARFIUP IMMIKKOORTORTAI NUTAAT

Mittarfimmik aqqusineq nutaaq ilutigalugu kiisalu siunissami nunaminertami ineriartortitsinissamut periarfissat, Ilulissat eqqaanni siunissaq ungasinnerusoq eqqarsaatigalugu illoqarfiup ineriartortinnissaani nunaminertanik pilersitsinissaq tunngavilerneqassaaq.

Ullumikkut nutaanik tikikkuminartunillu inuussutissarsiortunut inissivissanik amigaateqartoqareerpoq – minnerunngitsumik inissiaqarfissat nutaat kajuminnartullu illoqarfiup qanittut centerissanullu sanaartorfissat, atuarfiit, suliffeqarfiit il.il. Ilulissat illoqarfiannik nangittumik illoqarfittut nutaaliatut, Issittumi illoqarfiup inuiaqatigiittut piffissamut naleqquttumik kulturilimmik inooqataanikkullu neqeroorutinik ineriartortitsinissamik qulakkeerisussanik.

Mittarfimmik aqutissaq nutaaq Imersuup eqqaani nunaminertallu avannatungaaniittut illoqarfiup allilerneqarnissaanut periarfissiissaaq, kiisalu nunaminertat anginerusut Nuugaarsummiittut minnerusutut, ataasiakkaat, illoqarfiup ilaatut namminiussuseqarlutik nakernartut pilersinneqassapput.

- Illoqarfiup immikkoortua IMERSUUP eqqaaniittoq siusinnerusukkut tatsip imeqarfiu Ilulissat avannaatungaaniittoq. Tamanna illoqarfiup qanippoq kiisalu tatsimut kangerlummullu pitsaasumik isikkiveqarluni.
- Illoqarfiup immikkoortortaa Nuuk nunaminertani Nuugaarsummiissaaq. Nunaminertat angisuut illoqarfiup immikkoortortaanik inissialimmik, inuussutissarsiortifiusumik, kiffartuussinermullu atuuffeqartunik, soorlu assersuutigalugu atuarfik, pisiniarfiit minnerunngitsumillu hotelit kiisalu inuussutissarsiortut pilersinnissaannut periarfissiissapput.
- Illoqarfiup immikkoortortaa NARSARSUUP eqqaaniittoq attaveqatigiissutinik nutaanik atugarsaqartitsisoq, aammalu nunaminertat inuussutissarsiortunut pilersitsinissamut immikkut ittumik pitsaasunik periarfissaqartitsivoq.

Mittarfip avannaatungaani aqqusineq nutaaq Kangerluarsummi talittarfissamut inuussutissarsiortunullu aqqusiissaaq.

Siunissami aqqusineq Oqaatsut tungaanut uiguneqaruni, nunaminertat Kangerluarsuup avannamut kangianiittut sinerlugu illoqarfiliassat ineriartortineqarsinnaapput. Tassani illoqarfik uummaarissok sukisaarsaarfiusinnaasoq pilersinneqarsinnaavoq, siunissami illoqarfiup ineriartorteqqinnissaani nunaminertat atortussanngortittariaqalersinnaassappata.”

NEW AIRPORT AND ACCESS ROAD

It has been the overall objective of the former and the current Avannaata Municipal Council to seek to expand and strengthen the municipality's great tourism potential. In this context, the planned establishment of a new airport in Ilulissat with the capacity to receive transatlantic aircraft will play a crucial role – not only for tourism in the region, but also for the development of new business opportunities and thus growth. Together with the inclusion of Ilulissat's unique Icefjord on the UNESCO World Heritage List and the inauguration in 2021 of the Icefjord Centre, the foundation stones will thus be laid to strengthen a growing flow of tourists from all over the world.

The new airport is planned to be established immediately north of the existing airport. A future access road to the airport thus opens up the possibility of effectively creating a connection to the Brede Bay area.

The current airport road today crosses the bridge at the existing port. The bridge is already too narrow and worn with today's traffic, and with a possible blockage of the bridge, there are no alternative connections to the airport.

It is therefore proposed that the new road between the airport and Ilulissat be established east of the port entrance with direct connection to the southern part of Ilulissat, so as to limit unauthorised driving through the city's main street and across the bridge. The existing airport road can then serve as an internal distribution route in the new urban development areas.

NEW DISTRICTS

With the new airport road, as well as with the future development potential of the area, there is breeding ground for creating long-term urban development areas around Ilulissat.

There is already a need to lay out new, easily accessible commercial areas – and not least new, attractive residential areas with good urban spaces and areas for centre purposes, schools, institutions, etc., to ensure that Ilulissat city can continue to develop as a modern, Arctic urban society with up-to-date cultural and social services.

The new airport road allows for an expansion of the town around Imersuaq / Water Lake and the areas immediately north of it, as well as the possibility to include larger areas on Nuugaarsuk / Nordre Næs, which are established as minor, individual districts with their own character and attraction.

- The district around IMERSUAQ / WATER LAKE is located around the former drinking water lake just north of Ilulissat. Here there is proximity to the city and good opportunities for views of the lake and bay.
- The district on NÆSSET will be located on the areas out on Nuugaarsuk / Nordre Næs. Large areas allow for a district with both housing, centre functions such as school, shops and not least hotels, as well as business.
- The district at SLETTEN has good infrastructural conditions, and the area offers particularly good opportunities for business establishment.

North of the airport, the new road link will provide access to a future port and commercial area at Kangerluarsuk / Brede Bay.

If the road is extended in the future towards Oqaatsut, the areas along the north-eastern part of Kangerluarsuk / Brede Bay could potentially be developed for urban purposes. Here a new vibrant urban community with good recreational functions can be created if there is a need in the future to include additional areas for urban development.



ATTAVIIT | CONSTRAINTS



ILLOQARFIUP ALLIARTORNERANT KILLILIISUT AAMMA PERIARFISSAT

Attaviit piusut arlaqartut, illoqarfiup pioreersup alliartortinnissaanut periarfissanik killiliipput.

Kujataanut tunngatillugu, UNESCO-p nunarsuarmioqatigiinnut kingornussiaata nunatut innarlerneqarsimangitsuunissaanik aamma illoqarfiup avannamut kangiatungaani nunaminertat imermik pilersuiffiunissaanik kissaateqarnermi mianerisassat arlaqartut. Tamatuma nassatarivaa, illoqarfiup alliartornissaanut sammivik periarfissaasoq taamaallaat ataasinnaammat - avannamut.

Nuugaarsuup atorneqarnissaanut aalajangeeqataasussat tassaapput, qaartartuusiviup eqqaavissuullu immikkoortumiit peerneqarsinnaanissaat aamma immikkoortumi imermik pilersuinissamut soqutigisat maleruagassiorfigineqarnissaat, taamaalilluni illoqarfimmut qanittut nunaminertat pingaaruteqartut arlallit, illoqarfiup alliartortinneqarneranut ilanngunneqarsinnaanissaannut periarfissaq ammaaneqarsinnaammat.

Mittarfissap eqqaani nunaminertat immikkoortitaartut soorlu nunaminertat aporfissaqanngitsut pilersinneqarnissaat aalajangersarneqarpoq, taakkununga ilanngullugit (kote 75 m-imi) nunaminertat nallangasut. Kangerluarsummi illoqarfiup immikkoortuani nutaamik kiisalu umiarsualivimmi sanaartorneq siunissami taakkua tunngavigalugit piumasaqaateqassaaq, taamaattumillu illoqarfiup ineriartortinnerani tamakku eqqarsaatigineqassapput.

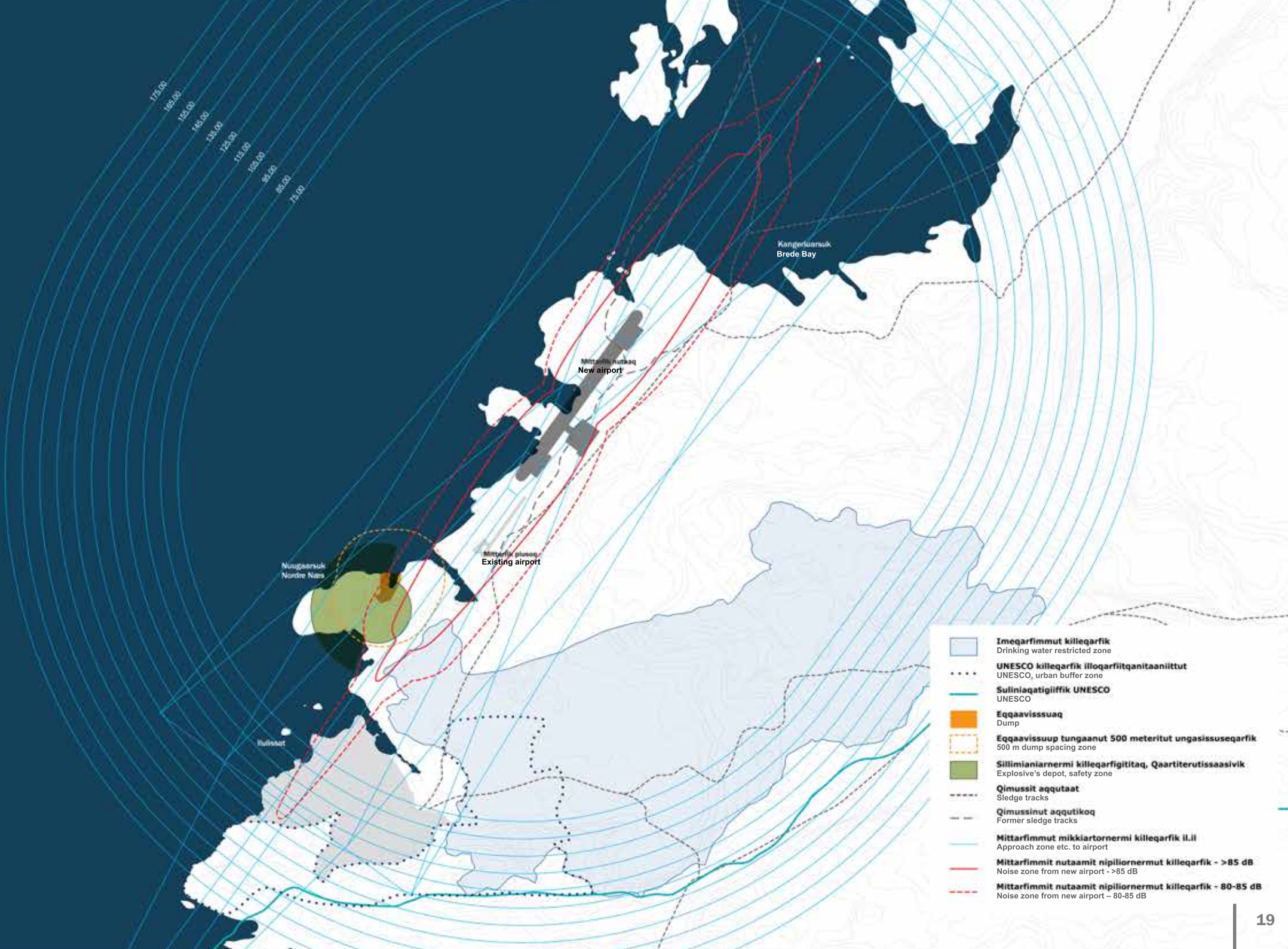
RESTRICTIONS AND OPPORTUNITIES FOR URBAN DEVELOPMENT

A number of physical constraints impose restrictions on the possibilities of developing the existing city.

To the south due to a number of reasons regarding the desire to preserve UNESCO's World Heritage List as a pristine landscape, and northeast of the city of water abstraction areas. This means that there is really only one possible direction of urban development – to the north.

However, the use of Nuugaarsuk/ Nordre Næs is conditional on the removal of an explosive's depot and a dump in the area and on the regulation of water abstraction interests in the area, so as to allow the inclusion of a number of important semi urban areas for urban development.

To this end, covenant zones around the future airport are defined in the form of obstacle-free surfaces, including a horizontal surface that must not be breached. Development in the new district as well as the harbour area at Kangerluarsuk / Brede Bay will continue to be subject to these requirements, and urban development must therefore take these into account.



175.00
165.00
155.00
145.00
135.00
125.00
115.00
95.00
85.00
71.00

Kangerluarsuk
Brede Bay

Mittarfimmiutunnaq
New airport

Mittarfimmiutunnaq
Existing airport

Nuugaarsuk
Nordre Naas

Hallsaart

- Imeqarfimmut killeqarfik**
Drinking water restricted zone
- UNESCO killeqarfik illoqarfiitqanitaanii**
UNESCO, urban buffer zone
- Suliniqatigiliffik UNESCO**
UNESCO
- Eqqaavissuaq**
Dump
- Eqqaavissuup tungaanut 500 meteritut ungasissuseqarfik**
500 m dump spacing zone
- Sillimianiarnermi killeqarfigitaaq, Qaarterutissaasivik**
Explosive's depot, safety zone
- Qimussit aqquataat**
Sledge tracks
- Qimussinut aqquatikooq**
Former sledge tracks
- Mittarfimmut mikkiartornermi killeqarfik il.il**
Approach zone etc. to airport
- Mittarfimmit nutaamit nipliornermut killeqarfik - >85 dB**
Noise zone from new airport - >85 dB
- Mittarfimmit nutaamit nipliornermut killeqarfik - 80-85 dB**
Noise zone from new airport - 80-85 dB

ILUSILERSUINERMUT PILERSAARUT

NUNATATIGUT PIUKKUNNAATILLIT

STRUCTURAL PLAN

LANDSCAPE POTENTIALS

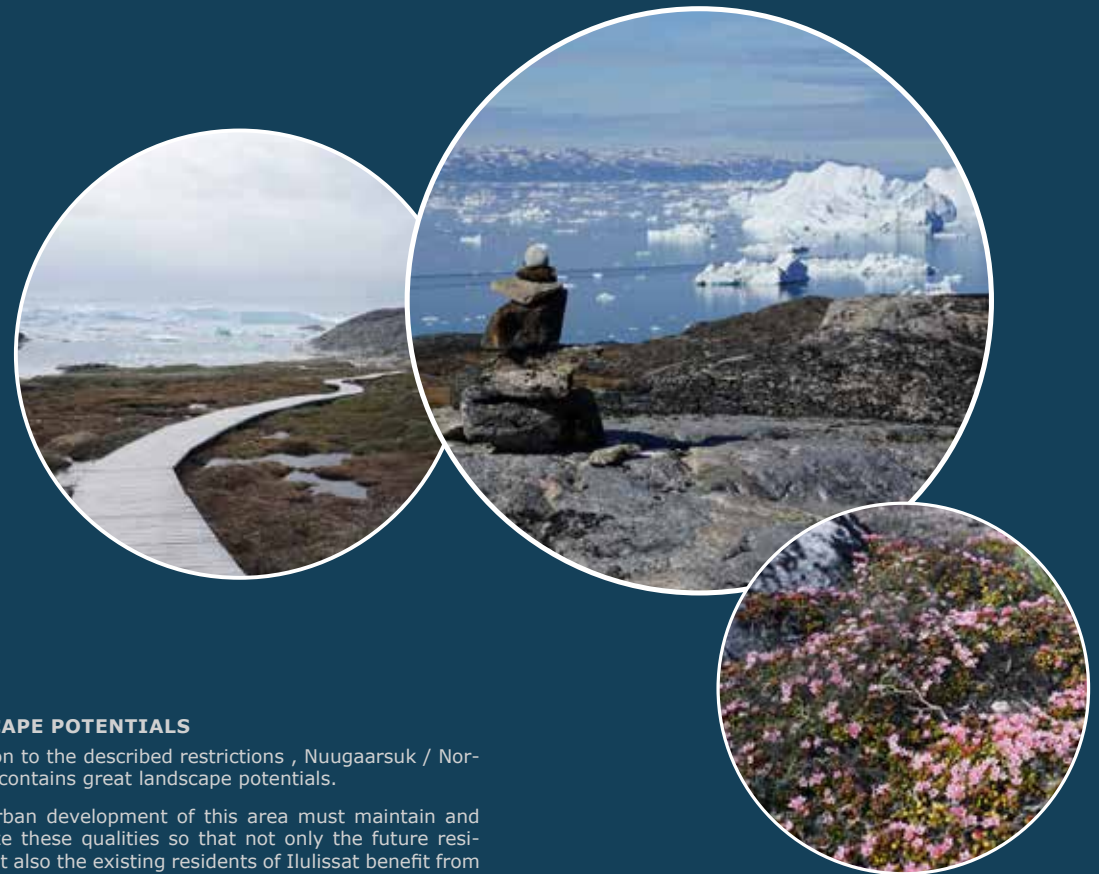


NUNATATIGUT PIUKKUNNAATILLIT

Attuumassutit taakkartorneqareersut saniasigut Nuugaarsuk nunap tungaatigut periarfissarpassuaqarpoq.

Sumiiffimmi tamaani illoqarfimmik siunissami ine-riartortitsinissaq attatiinnarneqassaaq pitsaaqqu-taalu ersarissarlugit, taamanikkussamut tamaani najugallit kisimik pinnatik, kisiannili aamma Ilulissani najugallit nuannaarutiginiassammassuk. Nuna asimiippalaartumi pitsaaqqutaasut aamma uuttuu-tinut ilasaataapput sumiiffiup takornarissanut piuk-kunnaateqarneranut.

Nunap assingani nunatat ataqatigiit soqutiginarlu-innartut takutinneqarput, taakkunani iluaqutaallu-innarsinnaavoq sanaartorfiugatik sukisaarsaartarfittut atoraanni. Saniatiguttaaqq qaqqajunnat nalu-naaqqutserneqarsimapput. Portorngit tamakku isikkivissiatut nutaanik aqqusersorsinnaapput sumiiffik ataatsimoortilerlugu Ilulissanullu atassuserlugu. Nunatatigut periarfissat aallaavigalugit nuna-minertat sinneri sanaartorfissannorsinnaapput.



LANDSCAPE POTENTIALS

In addition to the described restrictions, Nuugaarsuk / Nordre Næs contains great landscape potentials.

Future urban development of this area must maintain and emphasize these qualities so that not only the future residents, but also the existing residents of Ilulissat benefit from them. The landscape qualities are also important parameters in relation to the area's tourism potential.

On the map there are interesting landscape contexts, which can be recreationally released and exploited. At the same time, a number of mountain peaks are marked. These can be made available as height and vantage points with new contiguous path connections that can help bind the area together while connecting it to Ilulissat.

Based on the landscape potentials, the development can be located on the remaining areas.



Hotel Arcticimiit Nuugaarsuup tungaanut isikkivik
Nordre Naes seen from Hotel Arctic

ILUSILERSUINERMUT PILERSAARUT

INERIARTORTITSIFFISSATUT PERIARFISSAT

STRUCTURAL PLAN

POTENTIALITIES

ILLOQARFIUP INERIARTORTINNERANI PINGAARNERTUT KINGUNISSAQ

Nuugaarsuup sanaartorfiginissaani tamakkiisumi pingaarnertut kingunissaq takuntinneqarpoq.

ANGALLANNIKKUT AAQQISSUUSAAANEQ

Mittarfimmu aqquq nutaaq umiarsualivik kangeqqullugu ingerlassaaq, illoqarfiullu immikkoortuanut kisimi aqquqtaassalluni pingaarneq. Mittarfiiup tungaanut aqqusineq pioreersaq pingaarnersaajunnaarsinnaavoq illoqarfiullu immikkoortuani nutaami angallannermi aqquqtaasinnaalluni (aammalu iliveqarfiup Hotel Arcticillu akornanni aqqusineq matuneqarsinnaalissaaq. Aqquserngup ilaa taanna tamatuma kingorna pisuttuurfittut atorneqalersinnaassaaq).

Pffiiit illoqarfiup immikkoortortaaniittut tamarmik tamatuma kingorna aqqusinernik sanguffiusinnaasunik peqalissapput, immikkoortuni ataasiakkaanik aqqusinilersuisunik kiisalu immikkoortut akornanni pitsaasuni pisuinnarnut aqquteqartuni.

INISSIAT

Inissialiorfissat arlallit piukkunneqarput, tamarmik pitsaasumik isikkiveqarnissaminut periarfissaqarput toqqaannartumillu nunamut qorsooqqissumut aqqusinertigut qaqqakkullu toqqaannartumik attaveqarlutik, taamaasillutik inissiaqarfimmut toqqaannartumik nunamiissinnaaneq periarfissaqalissaaq.

SULIFFIIT, CENTERI AAMMA HOTELIT

Siunissami najugaqarumaartussat kiffartuunniarlugit illoqarfiup immikkoortuani nutaami nutaamik atuarfiliortoqarlunilu suliffeqarfiliortoqassaaq pitsaasunik aqqusineeqanik tikinneqarsinnaasunik.

Taamatuttaaq aamma najukkami pisiniarfinnik kiffartuussivinnillu pisariaqartitsisoqarnissaa naatsorsuutigineqarpoq, taakkulu illoqarfiup immikkoortuanut qanittumi pilersindegassapput aammalu inuit katersuuttarfittut naliginnaasutut atuutissallutik. Taamaattorli pisiniarfegarnikkut pisariaqartitsinerit sulii illoqarfimmi piusumiissapput, tamaani niuerneq nungutaqqunagu.

Aamma takornariaqarneq tapersersornialugu hotelinut nunaminertat kajuminnartut angisuut inniminnerneqassapput. Nunaminertat takutinneqartut assissaqanngitsumik isivigissorsuusinnaapput.

INUUSSUTISSARSIORNEQ

Suliffeqarfiit inuussutissarsiornermik ingerlataqartut pioreersut illoqarfimmiit piusumiit nuonnissaannut periarfissillugit neqeroorfiginissaat pisariaqarpoq, tassunga ilutigittillugu suliffeqarfiit nutaat nunaminertanik inuussutissarsiornermik aallussiffiusinnaasunik ullumikkumut tulluunnerusunik neqeroorfigalugit. Taamaattumik Itisuarsuit kujataatungaani nunaminertanik angisuumik inuussutissarsiornermut atugassisoqarsimavoq, mittarfiiullu aqquqtaata nutaap qanittuani nunaminertanik inuussutissarsiornermut periarfissanik pilersitsisoqarsimalluni. Taakkua talittarfimmi sammisassanut nunaminertanik inuussutissarsiornermut atugassanik nutaanik aamma Kangerluarsuup eqqaani avannarpasinnerulaartumi oqimaannerusumik inuussutissarsiornermut nunaminertanik ilaneqassapput.

NUNAMINERTAT SANAARTORFIUNNGITSUT

Aammattaaq pingaarnertut takorluugaq nunaminertani soqanngitsuni assigiinnigiiaani eqqarsaatigineqarsimavoq, taakkununga ilanngullugit, nunaminertat sammisaqarfiusinnaasut, iliveqarfiit aammalu nunaminertat qimmiliviusinnaasut, tamamik illoqarfimmi inuunermtut tamakkiisumut attuumassuteqartut.

MAIN URBAN DEVELOPMENT SCENARIO

In the main scenario, the full potential for expansion of Nuugaarsuk / Nordre Næs is shown.

TRAFFIC STRUCTURE

The new airport road will be routed east of the harbour run and will become the main access road to the district. The existing airport road can then be downgraded and serve as an internal distribution road for traffic in the new district (and could also be closed on the line between the cemetery and Hotel Arctic). The road stretch here will then be able to act as a path).

All sub-areas in the district will then be able to be served by smaller access roads serving each sub-area, as well as by good path connections between the areas.

HOUSING

A number of residential areas have been laid out, all with good views and direct connection to the green group of paths and mountain peaks, so as to provide opportunities for recreational activities directly related to the residential area.

INSTITUTIONS, CENTRES AND HOTELS

To serve future residents, space is made for a new school and institutions centrally in the new district and with good path connections.

There is also a certain need for local shops and services, which will be established close to the new residential areas and will act as natural social gathering places. However, the primary store functions will still be in the existing city, so that the commercial life here will not be blurred.

Large, attractive areas are reserved for hotels to support tourism. The areas shown offer unique views.

COMMERCE

There is a need to offer existing commerce the opportunity to move out of the existing city while offering new businesses more up-to-date business areas. Larger areas have therefore been laid out for business and warehouses south of Høllænderhavn, and the possibility of commercial areas close to the new airport road has been created. These are complemented by new commercial areas for port activity and heavier industries further north at Kangerluarsuk / Brede Bay.

UNDEVELOPED AREAS

The main scenario also includes several different types of exempted land, including recreational areas, cemeteries and dog-keeping areas, all of which are also part of the complete city life.

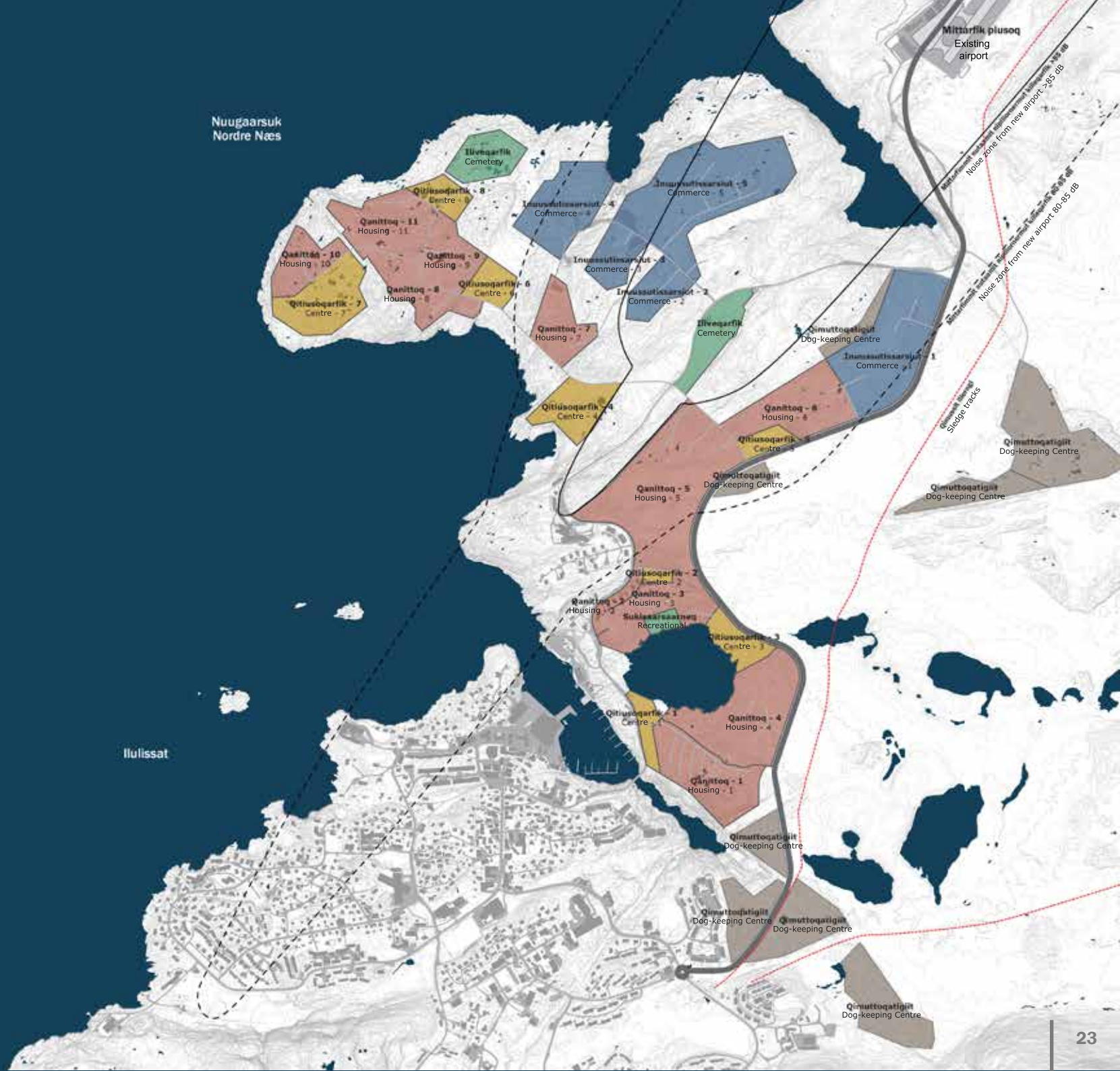
NUNAMINERTAT AREAS

Inissiaq/Housing 1	5,7 ha
Inissiaq/Housing 2	0,9 ha
Inissiaq/Housing 3	4,8 ha
Inissiaq/Housing 4	8,1 ha
Inissiaq/Housing 5	13,2 ha
Inissiaq/Housing 6	5,6 ha
Inissiaq/Housing 7	3,1 ha
Inissiaq/Housing 8	3,6 ha
Inissiaq/Housing 9	3,3 ha
Inissiaq/Housing 10	2,8 ha
Inissiaq/Housing 11	4,9 ha
Katillugit/Total	56,1 ha

Inuussutissarsiut/Commerce 1	9,0 ha
Inuussutissarsiut/Commerce 2	2,3 ha
Inuussutissarsiut/Commerce 3	2,3 ha
Inuussutissarsiut/Commerce 4	5,4 ha
Inuussutissarsiut/Commerce 5	12,0 ha
Katillugit/Total	31,0 ha

Qitiusoqarfik/Centre 1	1,2 ha
Qitiusoqarfik/Centre 2	0,4 ha
Qitiusoqarfik/Centre 3	1,9 ha
Qitiusoqarfik/Centre 4	3,2 ha
Qitiusoqarfik/Centre 5	1,1 ha
Qitiusoqarfik/Centre 6	1,6 ha
Qitiusoqarfik/Centre 7	4,5 ha
Qitiusoqarfik/Centre 8	1,5 ha
Katillugit/Total	15,4 ha

TAKORLUUGAQ PINGAARNEQ
MAIN SCENARIO



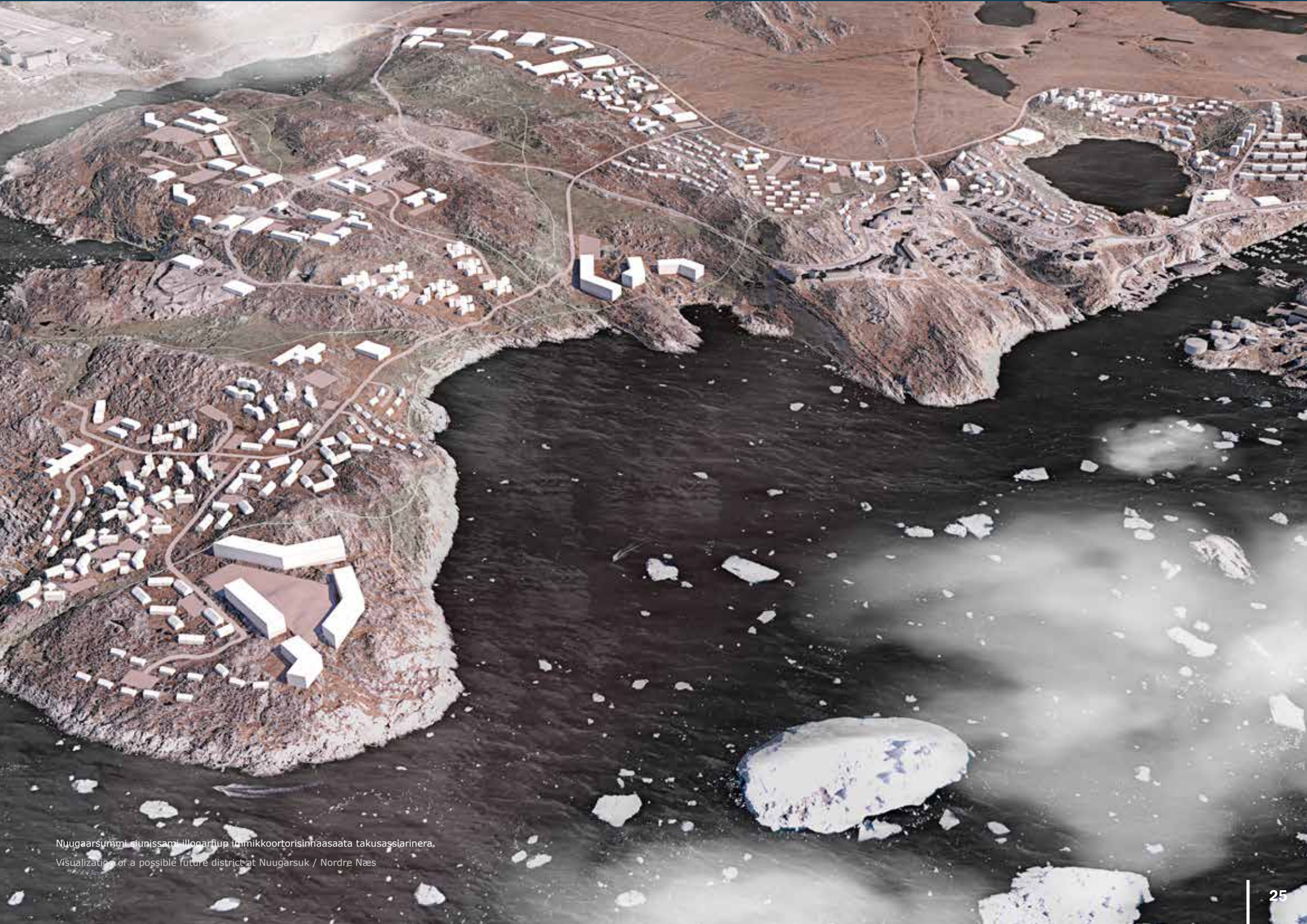
ILUSILERSUINERMUT PILERSAARUT

INERIARTORTITSIFFISSATUT PERIARFISSAT

STRUCTURAL PLAN

DEVELOPMENT POTENTIALS





Nuugaarsummi siunissami illoqarfup inmikkoortorisinnaasaata takusassiarinera.
Visualization of a possible future district at Nuugaarsuk / Nordre Nees

ILUSILERSUINERMUT PILERSAARUT

INERIARTORTITSIFFISSATUT PERIARFISSAT

STRUCTURAL PLAN

DEVELOPMENT POTENTIAL

PERIARFISSAQ ALLA – TAKORLUUGAQ 1

Maannakkutut itillugu nunaminertaq imermut assiutitut aammalu eqqaavissuarmut ungasittussatut pisussaaffiligaavoq.

Takorluukkami 1-imi attuumassuteqaatit nunaminertamiittut attatiinnarneqassappata, sanaartornissamut periarfissat piusut soorliit takutinneqarnikuupput. Takorluugaq pingaarnertut hoteliliorinissamut isikkivigissumik kiisalu inuussutissarsiorfiusinnaasunut periarfissiivoq, tassanili taamaallaat killilimmik inissialiortoqarsinnaavoq.

Imersuup eqqaani ullumikkut imeqarfiup killiligaanerani ikittunik sanaartornissamut periarfissaqarpoq. Taamaattoq taakkua annerpaartai atorneqareerput.

Hotel Arcticip avannaatungaani, mittarfiup aqgutaani nutaanngitsumi, erngup killiligaanerata avataani aamma ungasissusissamut killigititap eqqaani eqqaavissuarmi hoteliliorinissamut periarfissaqarpoq.

Taamatuttaaq Nuugaarsuup noorpiyani hoteliliorinissamut minnerusunillu piginneqatigiilluni inissialiornissamut periarfissaqarpoq. Tamatumanili maannakkut mittarfimmuut aqgutit piusup nunaminertanullu takinerusumik aqquserniorfigineqarnissaa pisariaqassaaq.

Mittarfimmuut aqgutit nutaanngitsup kangiani nunaminertaqarpoq anngajaamik inuussutissarsiornermut atorneqarsinnaasumik, Nuugaarsuullu qeqqani inissiivinnik inuussutissarsiornermillu pilersitsinissamut periarfissaqarpoq, inuussutissarsiuutit nunaminertap eqqaavittut atorneqarnissaanun akornutaassanngippata.

Inuussutissarsiornermi nunaminertat inissiallu nutaat nangittumik ikaartarfimmiit mittarfiup aqgutaanut piusunut aqqusineqassapput, taamaasillutit angallattut sulii amerlanerulissapput.

ALTERNATIVE - SCENARIO 1

In the current situation, the area is subject to restrictions in the form of a water barrier zone and the distance zone around the dump.

Scenario 1 shows which opportunities for expansion are available if the existing restrictions in the area are maintained. The scenario primarily allows for the establishment of hotels with attractive locations as well as some commerce, while only a limited number of accommodations is possible.

Around Imersuaq / Water Lake there are currently a few construction options outside the water barrier zone. However, most of these have already been used.

North of Hotel Arctic, close to the old airport road, there is the possibility of setting up a hotel outside the water restricted zone and the distance zone around the dump.

Likewise, at the very tip of Nuugaarsuk / Nordre Næs there is the possibility of hotel business and a smaller share of housing. However, this will require the construction of a longer road link from the existing airport road to the areas.

East of the old airport road there is space for a larger commercial area, and centrally on Nuugaarsuk / Nordre Næs there is space to establish warehouses and commerce, if the business types do not conflict with the area's need for dump.

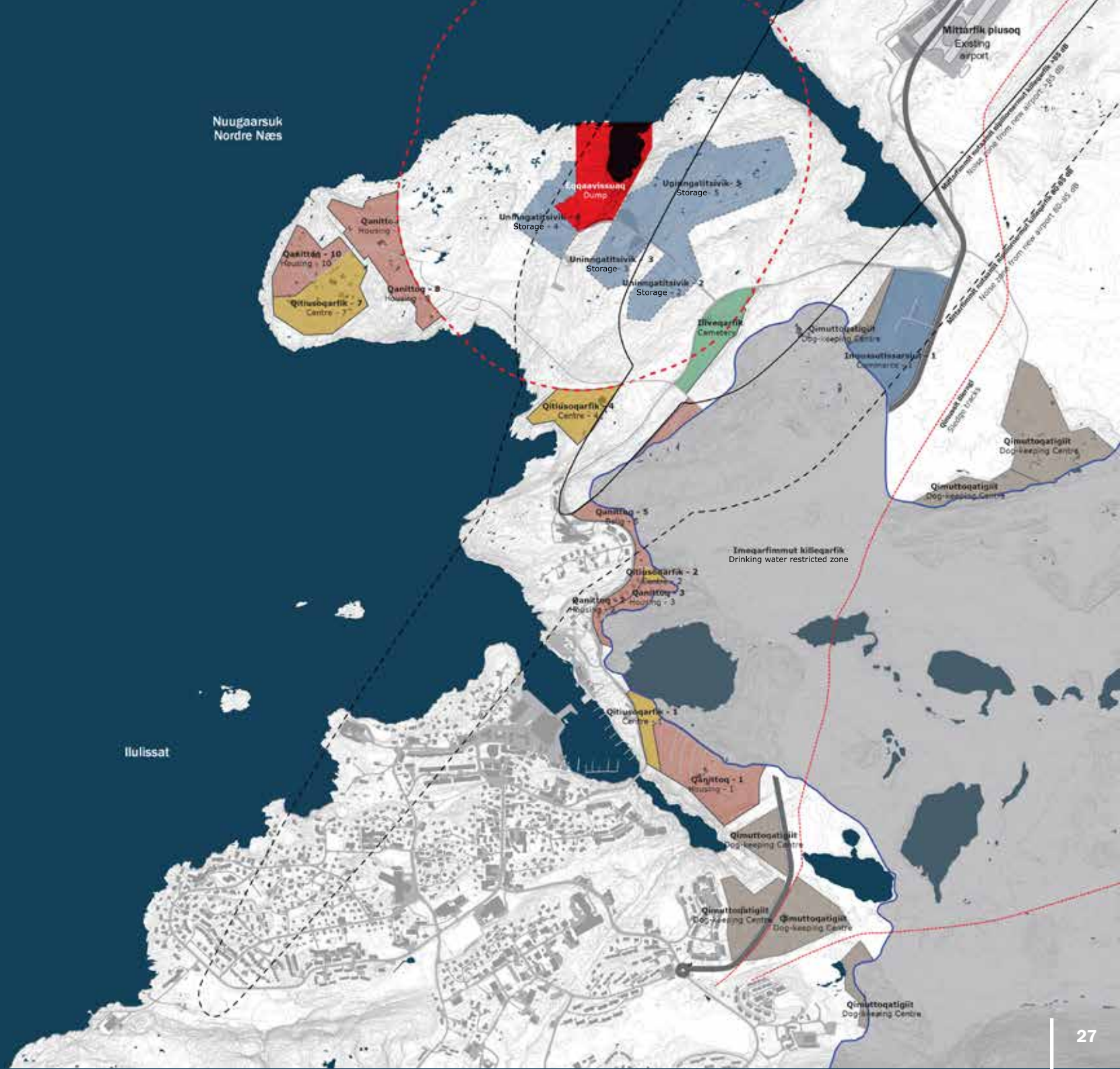
The new commercial areas and dwellings will continue to be served by traffic from the existing bridge link and airport road, which burdens the road network even more.

NUNAMINERTAT AREAS

Inissiaq/Housing 1	5,7 ha
Inissiaq/Housing 2	0,9 ha
Inissiaq/Housing 3	1,0 ha
Inissiaq/Housing 5	1,3 ha
Inissiaq/Housing 8	2,2 ha
Inissiaq/Housing 10	2,8 ha
Inissiaq/Housing 11	2,9 ha
Katillugit/Total	16,8 ha

Inuussutissarsiuut/Commerce 1	6,9 ha
Inuussutissarsiuut/Commerce 2	2,3 ha
Inuussutissarsiuut/Commerce 3	2,3 ha
Inuussutissarsiuut/Commerce 4	5,4 ha
Inuussutissarsiuut/Commerce 5	12,0 ha
Katillugit/Total	28,9 ha

Qitiusoqarfik/Centre 1	1,2 ha
Qitiusoqarfik/Centre 2	0,3 ha
Qitiusoqarfik/Centre 4	2,8 ha
Qitiusoqarfik/Centre 7	4,5 ha
Katillugit/Total	8,8 ha



Nuugaarsuk
Nordre Nees

Mittarfik plusoq
Existing
airport

Egqaavissaq
Dump

Uningatitsivik - 5
Storage

Uningatitsivik - 4
Storage

Uningatitsivik - 3
Storage

Uningatitsivik - 2
Storage

Illeqarfik
Cemetery

Qimuttoqatigil
Dog-keeping Centre

Imeqarfimmut
Cemetary

Qanittog - 10
Housing

Qitisoqarfik - 10
Centre

Qitisoqarfik - 7
Centre

Qanittog - 8
Housing

Qitisoqarfik - 4
Centre

Qanittog - 5
Housing

Qitisoqarfik - 2
Centre

Qanittog - 3
Housing

Qanittog - 2
Housing

Qitisoqarfik - 3
Centre

Qanittog - 3
Housing

Qitisoqarfik - 1
Centre

Imeqarfimmut illeqarfik
Drinking water restricted zone

Qimuttoqatigil
Dog-keeping Centre

Qimuttoqatigil
Dog-keeping Centre

Ilulissat

Qanittog - 1
Housing

Qimuttoqatigil
Dog-keeping Centre

Qimuttoqatigil
Dog-keeping Centre

Qimuttoqatigil
Dog-keeping Centre

Qimuttoqatigil
Dog-keeping Centre

ILUSILERSUINERMUT PILERSAARUT

INERARTORTITSIFFISSATUT PERIARFISSAT

STRUCTURAL PLAN

DEVELOPMENT POTENTIAL

PERIARFISSAQ ALLA - TAKORLUUGAQ 2

Takorluugaq 2-mi imermut assequt atorunnaarsinneqassappat, sanaartornissamut periarfissat takutinneqarsimapput, kisianni eqqaavik nuunneqanngilaq, taamaattumillu tamassuma nalaani sulii ungasissusissamut killiliisoqarpoq.

Imersuup eqqaani illoqarfimmut piusumut atatillugu nunaminertarujussuit inissialiorfissannqortinneqarsimapput.

Mittarfimmut aqquqtip nutaap pilersinneratigut nunaminertanut inissialiorfissanut annertuumik periarfissalinnut centeritut pisiniarfilitut suliffeqarfilitullu narsap tungaanut avannamullu nunaminertaq inuussitissarsiorfiusinnaasoq ammaanneqassapput.

Takorluukkami 1-isut aammattaq mittarfiup aqqutaata nutaanngitsup qanittuani, Hotel Arcticip avannaatungaani hoteliornissamut periarfissaqarpoq kiisalu Nuugaarsuup nuuani inissianik minnerusunik arlalinnik sanaartortoqarsinnaalluni. Tamakkuli mittarfimmut aqqummit nutaamiit nunaminertanut nutaamik aqquserniornissamik piumasaaqatitaqarpoq.

ALTERNATIVE - SCENARIO 2

In scenario 2, the expansion possibilities are shown if the water barrier zone is moved but the dump has not been moved, which is why there is still a security zone around it.

Around Imersuaq / Water Lake, large areas have been released for housing and centre functions in close relation to the existing city.

The establishment of the new airport road opens up the possibility of large residential areas with associated centre functions for shops and institutions facing the plain and further north, a large commercial area.

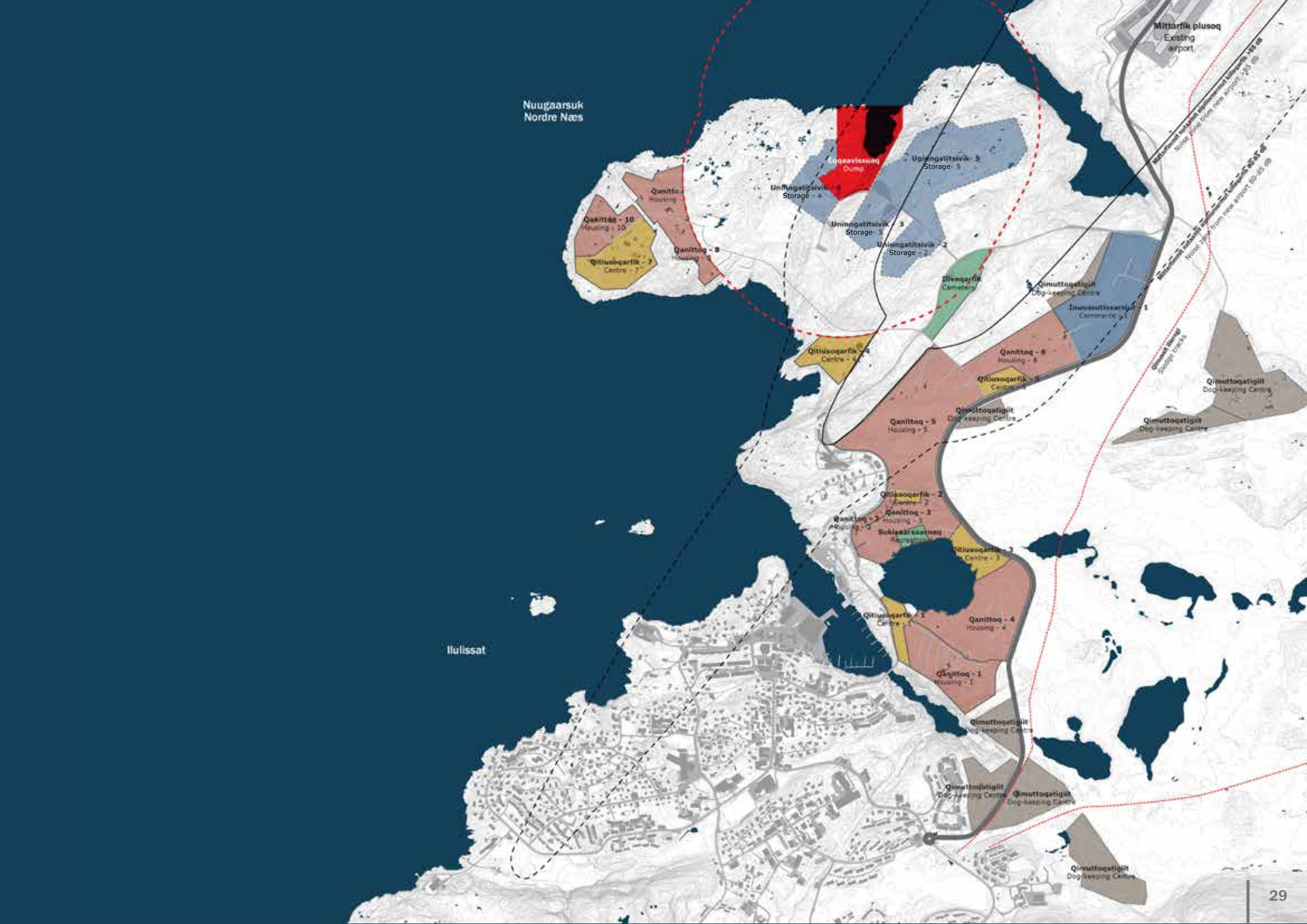
As in scenario 1, it is also possible to set up a hotel business close to the old airport road, north of Hotel Arctic, as well as the possibility of hotel business and a small number of accommodations at the very tip of Nuugaarsuk / Nordre Næs. However, this will also require the construction of a longer road link from the new airport road to the areas.

NUNAMINERTAT AREAS

Inissiaq/Housing 1	5,7 ha
Inissiaq/Housing 2	0,9 ha
Inissiaq/Housing 3	4,8 ha
Inissiaq/Housing 4	8,1 ha
Inissiaq/Housing 5	13,2 ha
Inissiaq/Housing 6	5,6 ha
Inissiaq/Housing 8	2,2 ha
Inissiaq/Housing 10	2,8 ha
Inissiaq/Housing 11	2,9 ha
Katillugit/Total	46,2 ha

Inuussutissarsiut/Commerce 1	9,0 ha
Inuussutissarsiut/Commerce 2	2,3 ha
Inuussutissarsiut/Commerce 3	2,3 ha
Inuussutissarsiut/Commerce 4	5,4 ha
Inuussutissarsiut/Commerce 5	12,0 ha
Katillugit/I alt	31,0 ha

Qitiusoqarfik/Centre 1	1,2 ha
Qitiusoqarfik/Centre 2	0,4 ha
Qitiusoqarfik/Centre 3	1,9 ha
Qitiusoqarfik/Centre 4	2,8 ha
Qitiusoqarfik/Centre 5	1,1 ha
Qitiusoqarfik/Centre 7	4,5 ha
Katillugit/Total	11,8 ha



Nuugaarsuk Nordre Næs

Ilulissat

Mittarfik plusoq Existing airport

Mittarfik plusoq New airport 145 m asl

Mittarfik plusoq New airport 250 m asl

Mittarfik plusoq New airport 400 m asl

Mittarfik plusoq New airport 550 m asl

Mittarfik plusoq New airport 700 m asl

Mittarfik plusoq New airport 850 m asl

Mittarfik plusoq New airport 1000 m asl

Mittarfik plusoq New airport 1150 m asl

Mittarfik plusoq New airport 1300 m asl

Mittarfik plusoq New airport 1450 m asl

Mittarfik plusoq New airport 1600 m asl

Mittarfik plusoq New airport 1750 m asl

Mittarfik plusoq New airport 1900 m asl

Mittarfik plusoq New airport 2050 m asl

Mittarfik plusoq New airport 2200 m asl

Mittarfik plusoq New airport 2350 m asl

Mittarfik plusoq New airport 2500 m asl

Mittarfik plusoq New airport 2650 m asl

Mittarfik plusoq New airport 2800 m asl

Mittarfik plusoq New airport 2950 m asl

Mittarfik plusoq New airport 3100 m asl

Mittarfik plusoq New airport 3250 m asl

Mittarfik plusoq New airport 3400 m asl

Mittarfik plusoq New airport 3550 m asl

Mittarfik plusoq New airport 3700 m asl

Mittarfik plusoq New airport 3850 m asl

Mittarfik plusoq New airport 4000 m asl

Mittarfik plusoq New airport 4150 m asl

Mittarfik plusoq New airport 4300 m asl

Mittarfik plusoq New airport 4450 m asl

Mittarfik plusoq New airport 4600 m asl

Mittarfik plusoq New airport 4750 m asl

Mittarfik plusoq New airport 4900 m asl

Mittarfik plusoq New airport 5050 m asl

Mittarfik plusoq New airport 5200 m asl

ILUSILERSUINERMUT PILERSAARUT

INERIARTORTITSIFFISSATUT PERIARFISSAT

STRUCTURAL PLAN

DEVELOPMENT POTENTIAL

SANAARTORNISSAMUT PILERSAARUMMUT ASSERSUUT

Nunaminertap qanoq atorneqarsinnaananut assersuut sanaartorfissatut pilersaarut sananeqarsimavoq, taannalu quppersakkami matumani ineriartortitsinissamat periarfissani aallaviupput.

Sumiiffik aaqjissuussaavoq illoqarfittaaniq arlariin-nik nunavimmud killeqarfilerlugu tamanna aamma isikkiviit mianeralugit. Illoqarfittaat periarfissiipput sanaartorfissaniq inissialoriaatsinillu tamalaaniq (illut ataasiakkaat, marloqiusat, uiguleriiaat, quleriiaat il.il.) aammalu sumiiffinni inissialoriaatsitut kissaatinut inissaqartitsilluni.

Sanaartorfissatut siunnersuummi assersuut takutinneqartoq inissianik 1.110-it missaanniittunik imaqarpoq, tassalu tamanna ima isumaqarpoq, innuttaasut nutaat 3.000-it. Taakkua saniasigut pilersarut ukunangga imaqarpoq:

- 43.500 m² miss. inuussutissarsiorfiit
- 5.000 m² miss. qjtusoqarfittut siunertallit
- 14.000 m² miss. akunnittarfinnut
- 3.500 m² miss. Paaqqinnittarfinnut
- 3.000 m²-it missaanni timersornermut kulturimullu sanaartugaq quleriiaak

Sanaartornissamat pilersaarut sanaartugassaniq aalajangersimasunik pilersaarutiniq imaqqangilaq, kisiannili taamaallaat ineriartornissamat pilersaarutit qanoq naammassineqarsinnaanersut takussutissaassalluni kiisalu nunaminertami sanaartukkat qanoq imminnut qanitsiginissaannut takussutissaassalluni.

EXAMPLE OF THE DEVELOPMENT PLAN

As an example of how the area can be exploited, a proposal for a structural plan has been drawn up, based on the development opportunities described in this booklet.

The area is organized around a number of urban districts which are demarcated for landscape and viewing opportunities. The neighbourhoods open up a variety of development options and styles (single houses, semi-detached houses, row houses, multi-storey blocks, etc.), and provide space for local wishes for living forms.

The example of a development plan shown contains about 1,100 homes, which will equate to about 3,000 new inhabitants. In addition, the plan includes:

- ca. 43.500 m² floorspace for business
- ca. 5.000 m² floorspace for centre purposes
- ca. 14.000 m² floorspace for hotels
- ca. 3.500 m² floorspace for institutional purposes
- ca. 3.000 m² floorspace for sport and cultural purposes

The development plan does not specify the specific building plans but should only be seen as an example of how development opportunities can be implemented and as an indication of which density can be expected from being established in the area.



Nuugaarsuk
Nordre Næs

Mittarfik plæzan
Existing
airport

Ilulissat

Communal Vejen til
Søndersø

IMERSUAQ

SANAARTORNISSAMUT PILERSAARUT

WATER LAKE

DEVELOPMENT PLAN

Piffik Imersuup eqqaaniittoq illoqarfimmut piusumut qanittumiippoq taamaasillunilu siullertut allisarnissaa silatusaarnerulluni. Taamaasilluni illoqarfik ataqatigiissoq qulakkeerneqassaaq, illoqarfimmilu piusumiittut atuuffiit (soorlu pisiniarfiit, suliffeqarfiit il.il.) atorneqarsinnaassapput, illoqarfiup immikkoortortassaata nutaap innuttaasutigut tunngavissai naammatsinnissai pilersinnissaalu tikillugit.

Piffiup qanoq allisarneqarsinnaaneranut assersuut tassaavoq, ilusilersuinissamut pilersaarummik suliaqartoqarsimanera, taannalu kittaartumik sanaartugassanngorlugu kitaatungaaniit kangiatatungaanut alliertortinnissaanik ersersitsivoq.

IMMIKKOORTOQ 1

Immikkoortoq 1-i tassaapput nunaminertat umiarsualiveqarfimmut mittarfimmullu aqqummut piusumut qanittut, nunaminertallu amerlanerpaartaat maanna pilersinneqariartulereerput. Taamaattoq maanna mittarfiup tungaanut aqquserngup piusup qanittuani centeriliorfusinnaasut hoteliliorfusinnaasullu atorneqanngitsut sulii piupput.

IMMIKKOORTOQ 2

Immikkoortoq 2 tassaavoq nunaminertaq avannamut kitaatungaaniittoq, tatsip tungaanut sivinganertami ataasiakkaanik ilaqutariinnut illuliorfigineqarsinnaasooq. Inissiat saniasigut nunaminertap avannaatungaani pisiniarfiliornissamut periarfissaqarpoq. Nunaminertaq aqqusinernit qanittumiittuniit tikinneqarsinnaassaaq.

IMMIKKOORTOQ 3

Immikkoortoq 3 marlunnik tatsip kujataatungaaniittunik avannaatungaaniittunillu nunaminertaqarpoq, nunaminertallu tamarmik immikkoortumut 1-imut 2-mullu aqqusinertigut atassuteqarput. Immikkoortoq 3 pukkitsunik illuliorfissatut siunnersuutigineqarsimavoq, taakkua eqimattakkuutaarlugit sananeqassapput, taamaasilluni illut akorngini ataatsimoorfissaqqat pilersinneqassallutik. Taakkua saniatigut kujataatungaani nunaminertaqarpoq, arlalinnik illunik immikkoortumi 1-imi pilersaarutigineqartut assiginik sanaartorfusinnaasumik.

Immikkoortup 1-3-p ataatsimoorussutaat tassaapput umiarsualivimmut kangerlummullu isikkivissuaqarnera aamma inissianuk pukkitsunut tunngatillugu, tamakkiisumut tatsimut isikkiveqarneq. Ilutigitillugu immikkoortut pingasut tamarmik mittarfimmut aqqutip nutaap sananeqarneranut atatinnagit pilersinneqarsinnaapput.

The area at Imersuaq / Water Lake is located close to the existing town and is thus appropriate to expand first. In this way, a cohesive city is ensured, where functions in the existing city (such as shops, institutions, etc.) can be used until the new district has a population base large enough to establish new ones.

As an example of how the area can be used, a proposal has been made for a structural plan, with an expansion rate in the form of division into stages indicating an expansion from west to east.

STAGE 1

Stage 1 includes the southernmost areas close to the port and the existing airport road, and a large part of the area is already being established. However, closest to the existing airport road, there are still unused construction opportunities for centre and hotel purposes.

STAGE 2

Stage 2 includes areas in the northwest of the area, which can advantageously be established as one-family houses on the slope down towards the lake. In addition to the homes, the area offers the possibility of setting up a convenience store in the far north. The area could be road served from the existing roads in the area.

STAGE 3

Stage 3 comprises two areas, south and north of the lake, and each of the areas is linked to road on stages 1 and 2, respectively. Stage 3 is proposed to be used for dense and low buildings, which are established in clusters to create small communities between the houses. In addition, there is potential in the southern area to establish a number of point houses, similar to those planned in stage 1.

Common to stages 1-3 is that the areas offer great views beyond the harbour and the fjord and for the lower located dwellings, optimal views of the lake. At the same time, all 3 stages could be established independently of the construction of the new airport road.



ONE-FAMILY HOMES

MINIMARKET

NEW AIRPORT ROAD

ROW HOUSES

ONE-FAMILY HOMES

SWIMMING FACILITY

ROW HOUSES/MULTI-STOREY BLOCKS

ONE-FAMILY HOMES

CENTRE FEATURES

ROW HOUSES

ROW HOUSES

POINT HOUSES

ROW HOUSES

POINT HOUSES





IMMIKKOORTOQ 4

Immikkoortoq 4 tassaavoq ineqarfik nanngajaaq narsarsuup tungaanukartoq. Nunaminertaq nunaminertanut allanut tasersuup eqqaaniittunut naleqqiullugu appasinneruvoq, kisianni tasersuaq narsarsuarlu qulaallugit isikkiviginnissamut annertuunik periarfissaqarpoq. Nunaminertap iluani illut assigiinngitsut sananeqarluarsinnaapput, illullu ataatsimoortarfiup eqqaani sananeqarsinnaallutik, taamaasilluni najukkami ataatsimoortarfeqalersinnaavoq.

IMMIKKOORTOQ 5

Immikkoortoq 5 tassaavoq kingulleq tatsip eqqaaniittoq aammalu naluttarfissatut aasaanerani silami naluffiusinnaasutut siunnersuutigineqarsimasoq, ukiukkullu saarlisaarfiusinnaasoq. Taakkua saniasigut sivinganertami tatsip tungaanut ataasiakkaani ilaqutariinnut illuortoqarnissaanut periarfissaqarpoq.

Immikkoortoq 4 aamma 5 mittarfimmuut aqquissamut nutaamut appakaaffiunissaa taakkununga apeqquataannigilaq.

SUKISAARSAARFIUSINNAASUT

Nunaminertaq katersorniarlugu sukisaarsaarfittullu periarfissat Imersuup eqqaaniittut atulersinniarlugit, tatsip sinaani aqqusineqqanik pilersitsinissamut periarfissaqarpoq, taakkulu aqqusineqqat illoqarfimmuut atassuserneqarsinnaapput siunissamullu isigisumik illoqarfiup avannamut illoqarfittaassaata nutaap tungaanut. Tamatumani tatsip avannaatungaa nunaminertaq sukisaarsaarfiusinnaasoq piareersimatinneqassaaq, nunaminertami sanaartorfigiuminaatsumi, kisianni ilutigitiillugu nunatap tungaatigut annertuumik nalilimmik.

STAGE 4

Stage 4 includes a larger residential area facing the plain. The area is lower than the other areas around the lake but has great viewing potential over both the lake and the plain. Within the area, different types of housing can be worked on, and housing is placed around a common area to allow for local communities.

STAGE 5

Stage 5 covers the last part of the lake area and is proposed to be used for a swimming pool with the possibility of establishing an outdoor facility which in summer can be used for sea baths, and in winter for access to ice skating. In addition, there is the possibility of a few single-family houses on the slope towards the lake.

Both stages 4 and 5 depend on road access from the new airport road.

RECREATIONAL POTENTIALS

In order to unite the area and activate the recreational potentials located in the area around Imersuaq / Water Lake, a coherent path network is built around the lake, which connects with the city and eventually the new urban areas to the north. In addition, north of the lake, an area is released for recreational area, in an area where terrain conditions make it difficult to build, but at the same time contain great landscape value.



MITTARFIMMIIT NUTAAMIIT KILLEQARFIIT - NIPILIORNERMUT TUNNGASUT

RESTRICTIONS FROM NEW AIRPORT - NOISE CONDITIONS

MITTARFIMMIK NUTAAMIK SANAARTORNERMI NIPILIORNERMUT TUNNGASUT

Nuugaarsuup avannaani mittarfik nutaaq ilaqarpoq, mittarfimmik nutaamik 2.200 meter-iusumik sanaartorneq, taamaalliluni timmisartunut inissaq taaguuserneqarsinnaavoq "tamanit atorneqarsinnaasoq IMC-timmisartunut inissaq", taanna imarpissuaq qulaallugu timmisartut ingerlaarfiini, akunnattumut ungasissumullu atorneqartartunit timmisartunit atorneqarsinnaavoq.

Mittarfik avatangiisnut sunniuteqartitsinerik nassataqassaaq, taakku tassaallutik mikkiartornermi aqcutissat allannguutaat aamma nipiliornermik sunnerneqaatit.

Mittarfiup tamakkorsornerani nipimik uuttortaanerit takutippaat, mittarfiup agguaqatigiissillugu nipiliornermi ilulissat imaluunniit Nuugaarsummi nunaminertat illoqarfimmik ineriartortitsiffiusut sunnissanngikkai.

Paarlattuanik sakkortunerpaamik nipiliornermut nipiliornermi killissarititaasoq, unnuakkut pisartussat naatsorsuutigineqarsinnaasoq (nal. 22 - nal. 07), illoqarfiup ilassutaani Nuugaarsummi eqquutsinneqarsinnaanngitsaq. Timmisartuq kujammut tingiartortillugu tamanna pisartussaassaaq.

Taamaattoq timmisartuussinerit tamarmiusut 2 %-ii unnuakkut taamaallaat pisarnissaat naatsorsuutigineqarpoq, taakku naligivaat ukiumut timmisartut aallarneri 50-inik ikinnerusut imaluunniit sapaatip akunneranut agguaqatigiissillugu ataatsimik ikinnerusut, taakkunanngalu 20 %-it kujammut tingiartortarnissaat naatsorsuutigineqarluni.

SANAARTORNISSAMUT PERIARFISSAT

Unnuunerani timmisartut nipiorsinnaanerannut killigititaq qallunaat iltersuutaanni 80 dB-uvoq. Nunaminertani killigititaq iluini illuliassanik pilersaarusiornissaat aallaaviusariaqanngilaq. Kisiannili unnukkut timmisartuqarpiartannginnera aallaavigigaanni, ikittuinnaallu kujammut aallariartarlutik, taava akornutitut oqimaalutaagaanni, pissutissa-qalersinnaavoq inssiassanut akuersinerik tunni-ussineq. Pilersaarummi kittorartaartumik titarnilersukkami titarnerup iluani inissiallornissamat tamanna atuuppoq (unnuami nipiorneq annerpaaq 80-85 dB-ssaaq).

Pinngitsoortitsiniarluni iliuusaasinnaasoq tamatu-ma tassaasinnaavoq piumasaqaat inissiat igalaaler-sortinnissaat nipimut annikillisaasartumik.

Pilersaarummi titarnivimmik qernertumik nunami-nerat takutinneqarput, taakkunani unnuami nipiliornermi annerpaaq 85 dB qaangissavaa. Nunaminertani taakkunani inissianik inissiisoqassanngilaq.

NOISE CONDITIONS DURING THE CONSTRUCTION OF A NEW AIRPORT

The new airport north of Nuugaarsuk / Nordre Næs includes the establishment of a new 2,200-metre runway, which can be classified as a "public IMC airfield" that can be used by medium- and long-haul aircraft on overseas flights.

The airport will have an impact on the surroundings in the form of changing approach surfaces as well as a noise impact.

Noise calculations for the airport in full operation show that the average noise from the airport will not affect Ilulissat or the urban development areas at Nuugaarsuk / Nordre Næs.

On the other hand, the noise limit for the maximum noise that can be expected during the night period (10pm - 7am) will not be met at the Nuugaarsuk / Nordre Næs urban development area. It will be in cases where a plane takes off to the south.

However, it is expected that only 2% of all flights will occur during the night period, or less than 50 departures per year or less than 1 per week on average, of which 20% are expected to take off to the south.

BUILDING OPPORTUNITIES

According to Danish guidelines, the noise limit for aircraft noise during the night period is 80 dB. As a general rule, no housing should be planned for areas within this limit. However, given that there are very few flights at night and that only a small proportion of these will start in the south, balancing these nuisances could argue that housing can be allowed. This will be the case for homes located within the dotted black line shown on the plan (where the maximum noise exposure during the night period will be 80 - 85 dB).

In addition, as a preventive measure, consideration may be given to requiring sound glazing in homes.

With a fully drawn black line, the plan lists the areas where the maximum noise exposure during the night period will be over 85 dB. No dwellings should be placed in these areas.



MITTARFIMMIIT NUTAAMIIT KILLEQARFIIT - NIPILIORNERMUT TUNNGASUT

RESTRICTIONS FROM NEW AIRPORT - NOISE CONDITIONS

NUNAMINERTAT AREAS

Inissiaq/Housing 1	5,7 ha
Inissiaq/Housing 2	0,9 ha
Inissiaq/Housing 3	4,8 ha
Inissiaq/Housing 4	8,1 ha
Inissiaq/Housing 5	1,9 ha
Inissiaq/Housing 8	3,6 ha
Inissiaq/Housing 9	3,3 ha
Inissiaq/Housing 10	2,8 ha
Inissiaq/Housing 11	4,9 ha
Katillugit/Total	36,0 ha

Inuussutissarsiut/Commerce 1	9,0 ha
Inuussutissarsiut/Commerce 3	2,3 ha
Inuussutissarsiut/Commerce 4	5,4 ha
Inuussutissarsiut/Commerce 5	3,2 ha
Katillugit/Total	19,9 ha

Qitiusoqarfik/Centre 1	1,2 ha
Qitiusoqarfik/Centre 2	0,4 ha
Qitiusoqarfik/Centre 3	1,9 ha
Qitiusoqarfik/Centre 4	3,2 ha
Qitiusoqarfik/Centre 6	1,6 ha
Qitiusoqarfik/Centre 7	4,5 ha
Qitiusoqarfik/Centre 8	1,5 ha
Katillugit/Total	14,3 ha

ALLAANERUSUMIK PERIARFISSAQ A

Allaanerusumik periarfissami A-mi immikkoortoq sanaartorfiussanngilaq, tassani inissianut unnuaanerani nipiliorneq 80 - 85 dB-*ip* akoranniippoq. Taamaaliornikkut inissianut nipiliornermut killissatut danskit ilitsersuutaat eqquutsinneqassaaq.

Tamatuma kingunerissavaa ataatsimut isigalugu pingaarnertut periarfissaminngarnit, nunaminertap annertussutisimigut minnerusup inissianut atorneqarnissaa taamaalillunilu qitiusoqarfimmik pisariaqartitsineq aamma minnerullissaaq.

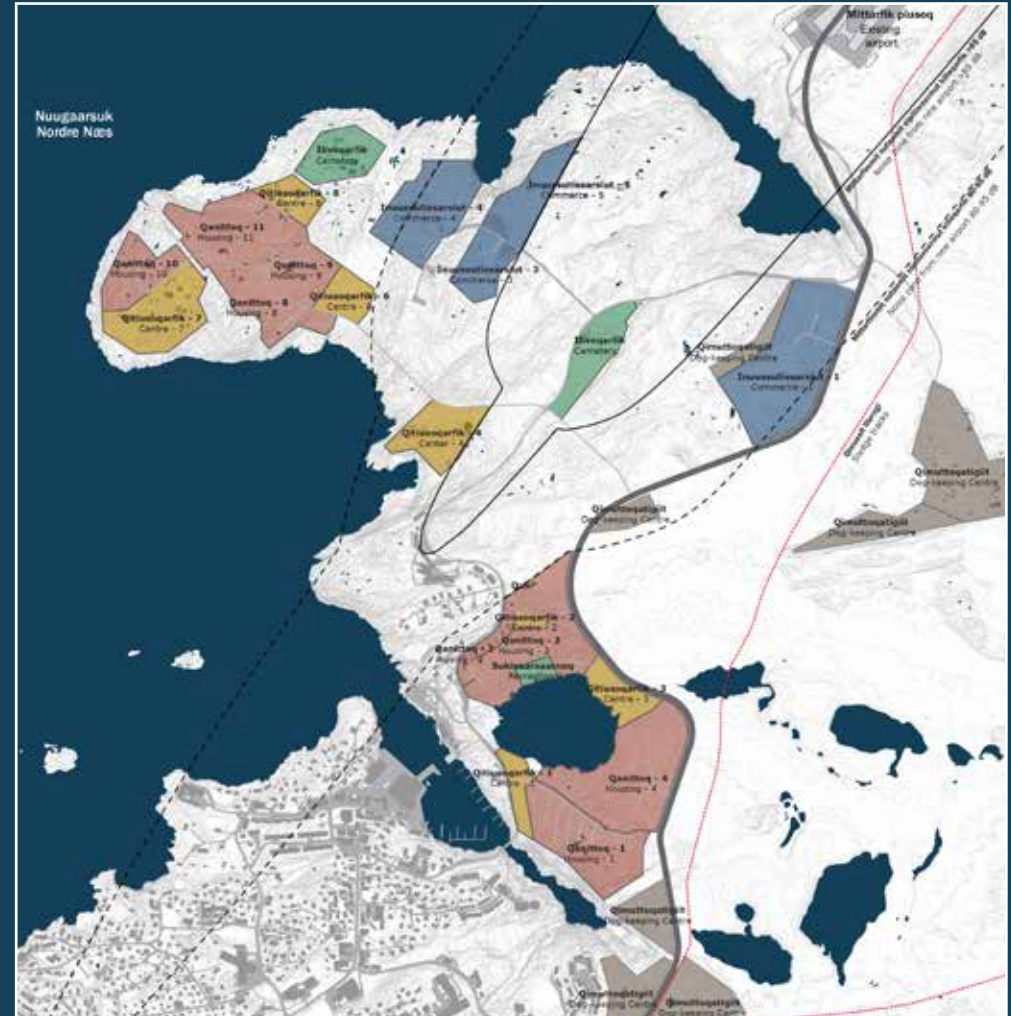
Piffik nipimik 85 dB sinnerlugu akornusersorneqartoq siunissami atorneqanngillunnassaaq, tassunga ilanngullugu inuussutissarsiorneq. Iliveqarfik piusoq piffimmiittoq atatiinnarneqassaaq.

ALTERNATIVE A

In alternative A, the area, which is affected by severe noise between 80 - 85 dB during the night period, is exempted from housing. This complies with the Danish guide for noise limits for housing.

Overall, this results in less housing than the main alternative, and thus also a less need for centre areas.

The area affected by noise higher than 85 dB is therefore exempted from all future applications, including business. The existing cemetery within the area is maintained.



ANNERTUNERPAAMIK NIPILIORFIUNERPAAP KILLEQARFIA SANAARTORFIUSSANNGITSOQ NIPILIORFIUNERPAALLU TULLIA INISSIALIORFIUSSANNGITSOQ.

PRIMARY NOISE ZONE FREE FROM DEVELOPMENT AND SECONDARY NOISE ZONE EXEMPTED FROM HOUSING.

MITTARFIMMIIT NUTAAMIIT KILLEQARFIIT - NIPILIORNERMUT TUNNGASUT

RESTRICTIONS FROM NEW AIRPORT - NOISE CONDITIONS

ALLAANERUSUMIK PERIARFISSAQ B

Allaanerusumik periarfissami B-mi immikkoortut nipiliorfiusut taakku inissianut, qitiusoqarfinnut aamma inuussutissarsiorfinnut atorneqassanngivipput.

Iluseq taanna naapertorlugu ineriartortitsinissaq toqqarneqassappat, inuussutissarsiornermut nutamik periarfissat killeqartorujussuussapput.

Nunaminertat unnuaanerani nipiliornermik taamaallaat eqqugaaffiusartut timmisartorsuarniillu qulaanneqartartut pillugit innersuussutigineqassaaq, eqqarsaatigilluakkamik – nipiliorfiusutut killeqarfiup ilaani – illoqarfiup alliaartortinissaa toqqarneqassasoq. Pingaarnertut periarfissami tamanna takutitassiarineqarpoq.

ALTERNATIVE B

In alternative B, the areas exposed to severe noise are completely exempted from housing, centre and business.

If one chooses to develop according to this method, there will be very limited scope for the attachment of new occupational areas.

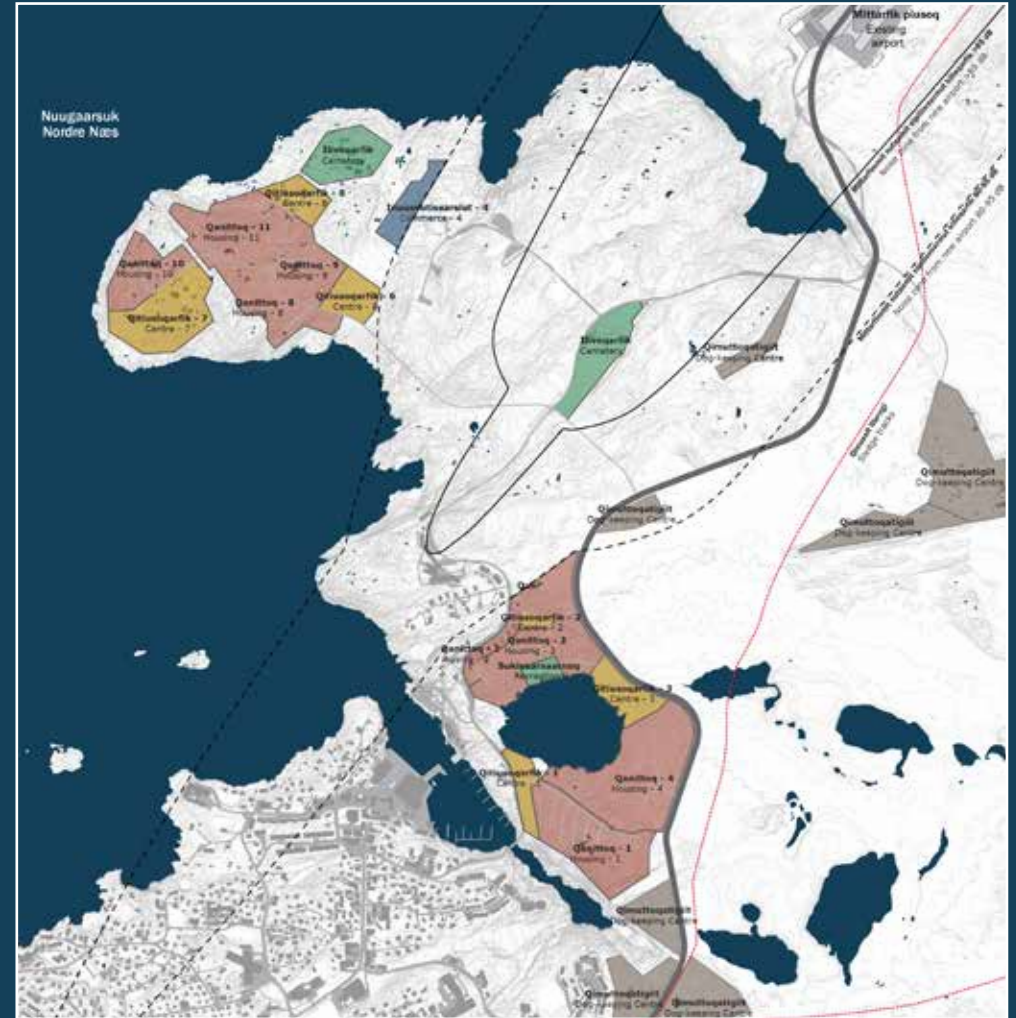
However, since the areas exposed to severe noise are exceeded exclusively during the night period and when flying the largest aircraft, it is recommended that the choice should be made to develop - albeit wisely - within parts of the noise zone. This is shown in the main alternative.

NUNAMINERTAT AREAS

Inissiaq/Housing 1	5,7 ha
Inissiaq/Housing 2	0,9 ha
Inissiaq/Housing 3	4,8 ha
Inissiaq/Housing 4	8,1 ha
Inissiaq/Housing 5	1,9 ha
Inissiaq/Housing 8	3,6 ha
Inissiaq/Housing 9	3,3 ha
Inissiaq/Housing 10	2,8 ha
Inissiaq/Housing 11	4,9 ha
Katillugit/Total	36,0 ha

Inuussutissarsiut/Erhverv 4	1,5 ha
Katillugit/I alt	1,5 ha

Qitiusoqarfik/Centre 1	1,2 ha
Qitiusoqarfik/Centre 2	0,4 ha
Qitiusoqarfik/Centre 3	1,9 ha
Qitiusoqarfik/Centre 6	1,6 ha
Qitiusoqarfik/Centre 7	4,5 ha
Qitiusoqarfik/Centre 8	1,5 ha
Katillugit/Total	11,1 ha

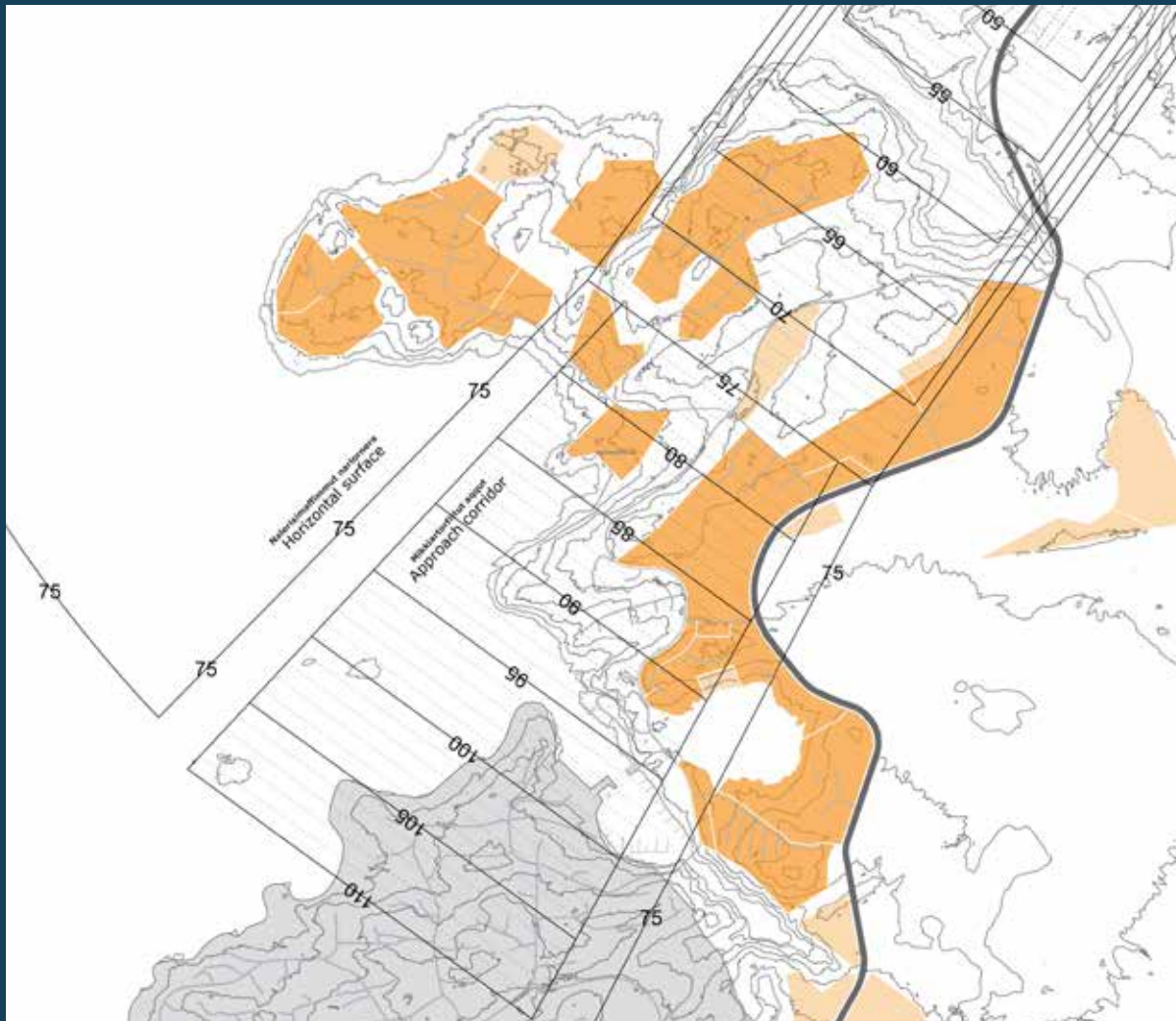


NIPILIORFIUP KILLEQARFIA PINGAARNEQ AAMMA TULLIA, ILLULIORFIGINEQARTUSSAANNGITSUT
PRIMARY AND SECONDARY NOISE ZONE FREE FROM SETTLEMENT



MITTARFIMMIIT ATASSUTEQAATIT - QUTSISSUTSIKKUT KILLIT

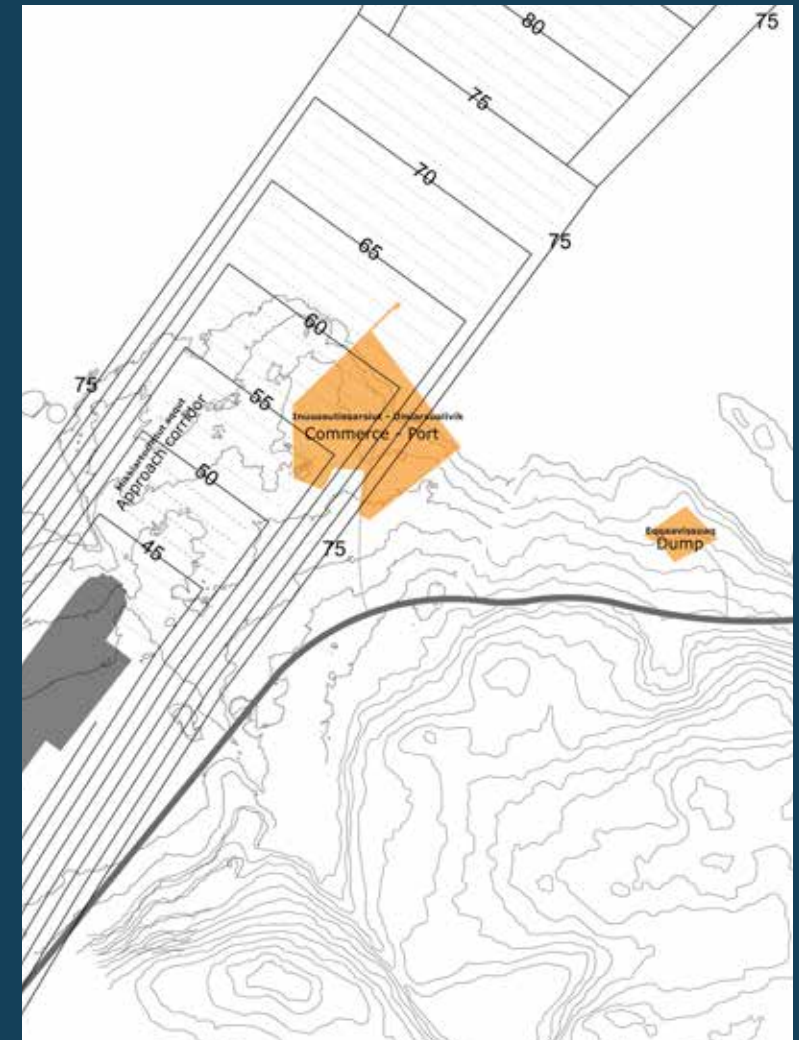
RESTRICTIONS FROM NEW AIRPORT - HEIGHT RESTRICTION



QUTSISSUTSIKKUT KILLIT

Mittarfiup piusup pilersussallu eqqaani piffiit qutsissutsikkut killilikkat piumasaqaatigineqarsimapput. Taakkununga ilaapput mikkiartorfissaq (assigninngitsunik qutsissuseqarluni) aamma sanimut (kote 75 meterimi), taakku qaangeqqusaanngillat.

Iloqarfiup immikkoortuani nutaami kiisalu Kangerluarsuup eqqaani umiarsualivimmi taamaattumik killiliussat taakku ataqqineqartariaqarput.



HEIGHT RESTRICTION

Around the existing airport as well as the future, conditional zones with height restrictions are imposed. This includes an approach corridor (varying altitude) and a horizontal surface (in level 75 m) which must not be breached.

Development in the new district as well as the harbour area at Kangerluarsuk / Brede Bay must therefore respect these limitations.

KANGERLUARSUK

INERIARTORTITSIFFISSATUT PERIARFISSAT

BREDE BAY

DEVELOPMENT POTENTIAL

INUUSSUTISSARSIORNERMI UMIARSUALIVIK

Nunaminertaq Kangerluarsuup eqqaaniittoq nutaamik inuussutissarsiornermi umiarsualivissaqqittutut inuussutissarsiortunut nunaminertalik ilalik pilersissallugu naleqquttuusoq nalilerneqarpoq. Nunaminertaq ima inissitaavoq aasaanerani sikoqarpiassanani imarlu itilluni. Tassunga ilanngullugu nuna annertujaa juvoq, maningaatsiarluni inuussutissarsiornermi pitsaasumik ator neqarsinnaalluni.

ANGALLANNIKKUT AAQQISSUUSAAANEQ

Umiarsualivik mittarfimmut aqqummut nutaamut atassuserneqarsinnaavoq, taanna Kangerluarsuup tungaanut 1,5 km missaannik uigunegartussaavoq. Tamatuma kingorna aqqusineq Kangerluarsuup eqqaanut ingerlatinneqarsinnaavoq siunissaq ungasinnerusoq isigalugu siunissami illoqarfiup atuuffissariumaagassai avannaatunga anerusumi pilersorlugit, kiisalu piffimmi nutaamik sisorartarfiliarluni. Taakkua saniasigut aqqusineq Oqaatsunut atassuserneqarsinnaavoq.

COMMERCIAL PORT

The area around Kangerluarsuk / Brede Bay is considered suitable for the establishment of a new commercial port with associated commercial areas. The area is located where it is relatively ice-free in summer and there is a large water depth. In addition, on land there is a larger, relatively flat area that can be used for good commercial reasons.

TRAFFIC STRUCTURE

The harbour area could be tied up on the new airport road, which will be extended about 1.5 km up to Kangerluarsuk / Brede Bay. The road can then be continued around Kangerluarsuk / Brede Bay and eventually supply potential future urban functions further north, as well as possibly a new ski resort in the area. In addition, the road can connect on to Oqaatsut.

NUNAMINERTAT AREAS

Umiarsualivik/Port	13,1 ha
Eqqaavissuaq/Dump	1,6 ha
Katillugit/Total	14,7 ha



UMIARSUIT TAKORNARIARTAATIT

Nunaminertat umiarsualivimmiittut umiarsuarnut takornariartaatinut nutaaliaasunik atortulersukkanut ataavartumik talittarfissaannik tikittarfissaannillu umiarsuarnut taliffigissallugu kajuminnartumik pilersitsinissamut periarfissiivoq.

EQQAAVISSUAQ

Umiarsualiviup suliffiusup kangiatuginnguani nunaminertaq eqqaavissuarnut inissiivissatut siunnersuutigineqarpoq. Eqqaavissuup nuunneratigut nunaminertat kajuminnartut illoqarfimmut qanittut inuussutissarsiornermut atorneqalersinnaapput Nuugaarsummilu inissialiornissamut periarfissaqartut.

Umiarsualiveqarfiup inuussutissarsiorfiusup kangiani inisserneqarnermigut eqqaavissuaq sinersorluni umiarsuarnik takornariartaatinut illunullu inuussutissarsiornermut atortunut kiisalu mittarfimmut sillimaniarnikkut ungasissussaa ajunngilaq.

Taamaattorli suli umiarsualiveqarfimmut ima qanitsigaaq, siunissami taamatut kissaateqaraanni, eqqakkanik Kalaallit Nunaanni qitiusumut usilersornissaq ajornassanani.

CRUISE SHIPS

The harbour areas provide the opportunity to establish a permanent landing site for cruise ships with modern facilities and arrival centres that can make it attractive for ships to dock.

DUMP

Immediately east of the commercial port, an area for the location of the dump is proposed. By moving the dump here, attractive, semi-urban commercial areas and the possibility of establishing housing on Nuugarsuk / Nordre Næs are released.

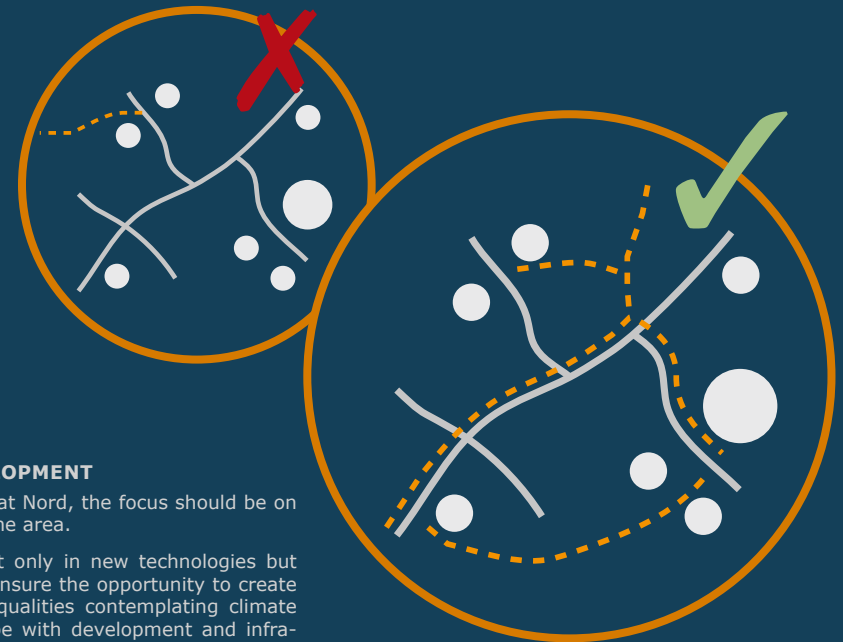
With the location east of the commercial port, the dump is located at an appropriate distance of cruise ships and commercial buildings, as well as outside the security distance to the airport.

However, it is still located at such a short distance to the port itself that it will be possible to ship waste for central combustion for Greenland if this is to be done in the future.



ASSIGIINNGISSUTSIT AAMMA ILLOQARFIUP ILAI

TYOLOGY AND URBAN CREATIONS



ATTANNEQARSINNAASUMIK ILLOQARFIMMIK INERIARTORTITSINEQ

Ilulissat avannaatungaata pilersaarusiorneqarmeranut atatillugu piffimmi attanneqarsinnaasumik ineriartortitsineq qitiutinneqartariaqarpoq.

Attasinnaneq tassaannaassanngilaq teknologii nutaaq, kisianni aamma politikikkut takorluukkat, najugaqarfinnik inissianillu kajuminnartuni pilersitsinissamut periarfissanik qulakkeerisinnaasut, silaannaap pissusaanut tulluussarneq, kulturi aamma nuna sanaartorfiusimasooq attaveqaqatigiissutillu ataatsimut isigalugit attanneqarsinnaasut.

Assersuutitu Paakitsumi imermut nukissiorfik tassani eqqarsaatigineqarsinnaavoq.

Imermut nukissiorfik nukimmik annertuumik atorneqanngitsumik peqarpoq, taannalu Ilulissat avannaatungaani illoqarfiup immikkoortuani nutaami ineriartortitsinermut aaqqissuullugu atorneqarsinnaavoq, suliatut angusaqarusussuseqarluni, attanneqarsinnaasumik illoqarfimmik ineriartortitsinermi suliniutitut.

ILLOQARFIMMUT TUNNGATILLUGU SISSUIGASSAT

Attanneqarsinnaassutsimi sissuigassat ilaattut illoqarfiup immikkoortortaanni nutaani illuliat imminnut qaninnerullutillu eqikkarsimaneruseriaqarput, taamaasilluni aqqusinernik attaveqaqatigiissutinillu pisariaqartitsineq annikillisarneqassaaq aammalu kikkut tamarmik angallaffiinik pilersitsinissaq pinngortitamillu allanngutsaaliuineq attanneqarsinnaapput. Assersuutigalugu angalaaffimmik kallerup inertortumik pilersitsisoqarsinnaavoq, soorlu monorailinik, qimuttuittuaqqanik assigisaannilluunniit imermut nukissiorfimiit innaallagialersorneqarluaarsinnaasunik pilersitsisoqarsinnaavoq.

Pisuinnarnut pissutsit kajuminnartut aqqusineqqanut illoqarfiup immikkoortuusa akornanni aneersuarfiusinnaasut aamma pisuinnaat aqquataat aqquserngit sinaanniinnut illoqarfimmi inuunermut pitsaasumut aamma illoqarfimmut attanneqarsinnaasumut pingaaruteqartorujussuupput.

SUSTAINABLE URBAN DEVELOPMENT

As part of the planning for Ilulissat Nord, the focus should be on the sustainable development of the area.

Sustainability must be found not only in new technologies but also in political visions that can ensure the opportunity to create attractive housing and housing qualities contemplating climate adaptation, culture and landscape with development and infrastructure in a sustainable whole.

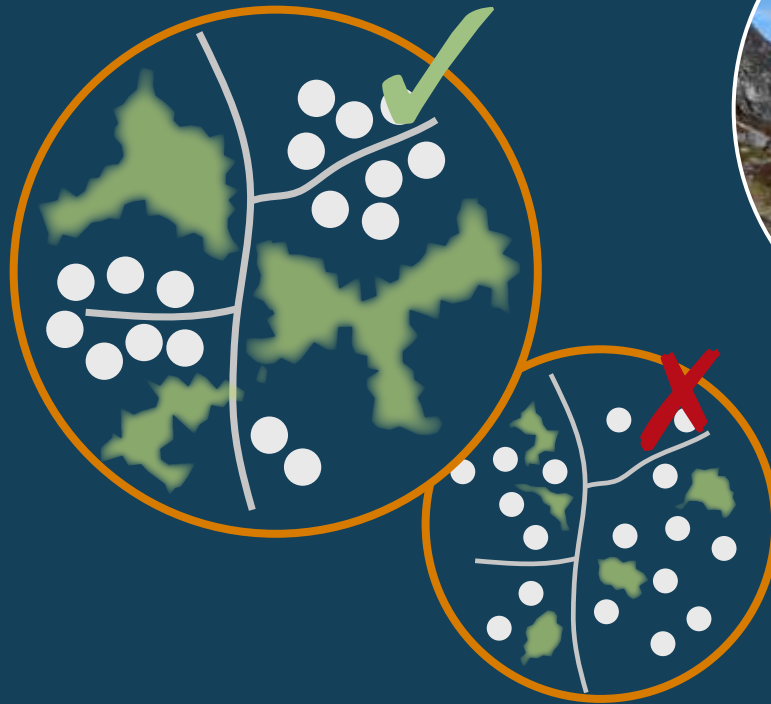
As an example, the hydroelectric power plant at Paakitsoq can be included in this.

The plant has a large, unexploited potential of clean energy, which can be usefully used to organize the development of the new districts north of Ilulissat as an ambitious, sustainable urban development project.

URBAN CONSIDERATIONS

As part of the sustainable considerations, the new neighbourhoods should work with denser and more compact buildings that can minimise the need for roads and infrastructure and support the possibility of establishing public transport and preserving natural landscapes. For example, a transport trace may be established with an electric transport system, possibly in the form of a monorail, light rail or the like, which can usefully use electricity from the hydroelectric power plant.

Attractive conditions for pedestrians in the form of recreational path connections between the districts and paths along roads are also essential to support good urban life and a sustainable city.



NUNAMUT TUNNGASUTIGUT EQARSAATIGILLUAGASSAT

Illoqarfiup ineriartortinnerani qaartitserinerit imaluunniit sanaartukkat inissinnerlutat nunaminertani ataatsimut ataqatigiinnermik unammillertut pinngitsoorniarlugit, piumasarineqartariaqarpoq, qanoq sanaartorneq nutaaq pitsaanerpaamik minnerpaamik qaartiteriffusoq nunamillu allanngortitsisoq nunamut tulluussarneqarluarnerusinnaanersoq.

Ineriartortitsinissami pilersaarummi illoqarfiup akornigini qorsooqqissut sanaartorfiginnginnissaat suliarineqarsimavoq, tamatumani nunaminertat sukisaarsaarfiusut pitsaasut qulakkeerniarlugit. Avatangiisini qanittuni nunaminertanut sukisaarsaarfiusunut aamma suliamut ilanngunneqartariaqarput sanaartorneq sukisaarsaarfiusut tungaannut qanoq inissinneqartariaqarnersoq, taamaasilluni sanaartorneq nunaminertami inissinneqarlunilu ilusilersorneqassaaq, tamaani pinngortitamut ikorfartuutaalluni ajoqutaanngitsaq.

LANDSCAPE CONSIDERATIONS

In order to avoid an urban development where disfiguring blasting or unfortunate building location led to the whole of an area being challenged, it should be required to adapt new buildings to the landscape in the best possible way on the basis of a principle of minimal blasting and terrain regulation.

The development plan has worked on the freeing of green wedges between the building zones to ensure good recreational areas. In the immediate environment, work should also be done on how the development is positioned towards the recreational areas, so that the development is placed and designed in a way that supports the natural areas and does not form the backside against them.

SANAARTORNERMI POLITIKKI AAMMA ILUSILERSUINERMI QUPPERSAGAQ

Taamaasilluni illoqarfiup immikkoortortassaasa nutaat mianerisassat arlallit ilaatinnissaat ataqtigiissarnissaallu ilarissavaat. Ataqtigiissuserup qulakkeernissaa pisariaqartoq illoqarfiup ineriartortinnerani aalajangersimasunik anguniagaqarnikkut malittarisassaqaqarnikkullu ingerlanneqassaaq. Tamanna Ilulissanut sanaartornermi illoqarfiup immikkoortuinut ataasiakkaanut politikkeqarnikkut ilusilersuinermilu quppersagaqarnikkut pisinnaavoq, tamanna ataatsikkut nassaarsarsiornermut isumassarsiorfiusinnaavoq aammalu aaqqiissutissatut periarfissat tunngaviusut qanoq inneri oqaluttuarisinnaallugit.

Ilulissanut sanaartornermut politikki Ilulissat siunissami qanoq isikkoqarnissaanut tunngaviusumik kissaatit suliarisinnaavai. Illoqarfiup isikkuata ilusaatalu isumaqarfigineratigut, illoqarfiup ilisarnartup immikkuullarissumik ilisarnaatillip pilersinnissaanut ilapittuisoqarsinnaavoq. Illoqarfik pinnersoq oqimaaqatigiissorlu, innuttaasut pigisaat immikkuullarissumik ilisarnaatilik, takornarissat tikittut kajumaffissaat.

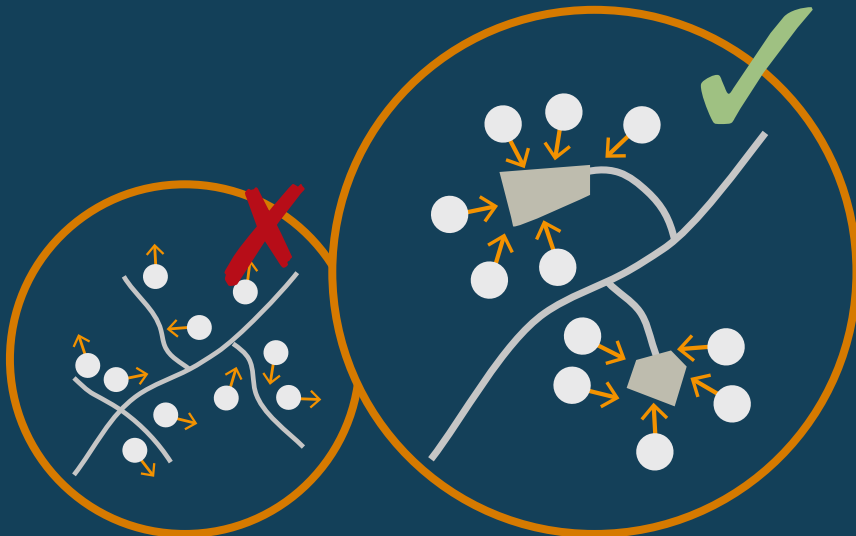
Sumi qanorlu sanaartornissamut isuma aamma sanaartortutut aningaasaliisunullu ersarillisissavaa, suliniutit suut suliarineqassanersut, taamaasillunilu sanaartukkanut suliat pillugit suliarinninnermut atatillugu oqinnerulissalluni.

URBAN TYPOLOGY

When drawing up development plans for the individual areas, various typology can be worked on to support the community and good neighbourly relations.

The focus should be on how to create buildings where the houses position themselves with a relationship with each other and where meeting places between people are created. It can be with a common area around a closed residential road, a common town square between multi-storey housing structures, a total walking system between a cluster of row houses or the like.

Furthermore, the structure of the development itself can contribute to an increased level of common functions such as communal laundry, communal workshop, communal kitchen, car-sharing/ snow-mobles etc. This will not only save resources but will also help to create social links.



ILLOQARFIIT AALAJANGERSIMASUMIK ILUSILLIT

Nunaminertanut ataasiakkaanut tunngatillugu sanaartornissamut pilersaarutiop suliarinerani ilutsit assigiinngitsut ataatsimoorussinnermut sanilerilluarnermillu tapersuisut suliarineqarsinnaapput.

Qanoq illuliortoqarsinnaanersoq qitiutinneqartariaqarpoq, illut qanoq imminnut atatillugu inissinneqarsinnaanersut, aammalu inuit akunnerminni naapiffissaannik sumi pilersitsisoqarsinnaanersoq. Taakku tassaasinnaapput illunut aqqusinermi matoqqasumi ataatsimoorfiusinnaasut, inissiani quleriaani ataatsimoorussamik illoqarfimmi pisuinnaat aqqutaat pisiniarfittalik, illut inissiat uiulikutsut imaluunniit assigisaasa akorngini ataatsimut pisuinnarnut aqquserngit.

Aammattaaq sanaartornermi immini iluseq ataatsimoorfinnik annertunerusunik pilersitsinnaavoq, soorlu assersuutigalugu errorsarfik, sannavik, igaffik, biilit avitseqatigiissutit/qamuteralaat avitseqatigiissutit, kisianni aamma inuit akunnerminni attaveqatigiinnerannik pilersitsisut.

COMMERCIAL AREAS

In commercial areas there may be warehouses and mixed-appearance and quality buildings contributing to give a messy appearance and a less attractive expression in relation to the surroundings.

By incorporating individual guidelines into the business areas, a more coherent and attractive urban picture can be ensured.

In particular, work should be done on the design and location of the development by the attachment of construction fields along the roads and the placement of the buildings in a construction line facing the roads. This ensures a nice and quiet cityscape against the roads where citizens and tourists pass. The commercial development along the roads will shield the remaining area, where there may be a freer framework for the location and appearance of the development as well as warehouses.

INUUSSUTISSARSIORNERMUT NUNAMINERTAT

Nunaminertani inuussutissarsiorfiusuni sanaartorfiit assigiinngitsunik isikkoqarsinnaallutillu pitsaassuseqarsinnaapput, taakkulu tukattumik avatangiisnik kajuminnannginnerusutut isikkoqartitsilersarput.

Nunaminertani inuussutissarsiorfiusuni ataasiakkaanik malittarisassanik ilanngussinikkut, illoqarfiup isikkua ataqatigiinnerusoq kajungernerarnerusorlu pilersinneqarsinnaavoq.

Ingammik aqquserngit anillaffiusartut illoqarfiup sanaartorerani ilusilersorlugillu inissiffiat aqquserngit sinaani sanaartorfissaliinikkut aammalu illuliat aqquserngit tungaannut tulleriaarlugit inississorneqarsinnaapput. Taamaasilluni aqquserngit tungaannut illoqarfiup isikkua kusanartooq eqqissisimaneerlu pilersinneqarsinnaapput, tassanilu innuttaasut takornarissallu ingerlaarsinnaapput. Aqquserngit sinaanni inuussutissarsiornermut sanaartorneq nunap immikkoortuusa sinneri assissavai, sanaartukkap inissinnera isikkualu kiffaanngissuseqarnerusunik tunngaveqarsinnaavoq.

ARCHITECTURE POLICY AND DESIGN MANUAL

The development of the new neighbourhoods will thus include the need to involve and coordinate a wide range of considerations. In order to ensure the necessary interaction, more concrete objectives and rules for urban development should be discussed and established. This can usefully be achieved by developing an architecture policy for Ilulissat and a design manual for the individual districts, which at the same time will inspire creativity and describe further principled solutions.

An architecture policy for Ilulissat can address the overall wishes for what the future of Ilulissat should look like. By having an attitude to the city's appearance and structure, it can help to create a recognizable city with a special identity. A beautiful and harmonious city that citizens have ownership of, and with a special identity, which tourists visiting the city will be drawn to.

Furthermore, an attitude to what to build where and how will make it more visible to builders and investors which types of projects to work with, thereby facilitating the processing of construction cases.



PIVIUSUNNGORTITSINISSAMIK PIUMASAQAATIT PRECONDITIONS FOR REALIZATION

Ilulissat avannaatungaani nunaminertat ineriartortinneqarnerat naammassiniarlugu, piumasaqaatit arlallit piviusunngortinneqassapput. Taakkua ilaat tassaapput illoqarfiup killingata, nunaminertat atornerqarnerisa assigisaasalu allannortinneqarnerat, allalli sanaartormik suliaqarnermi aningaasaliinissamik piumasaqaateqarput, taakkununga ilanngullugit aqquserniorneq aamma attaveqatigiissut allat.

IMEQARFIMMUT PALLINGUTEQQUSAANNGINNERMUT KILLEQ

Siusinnerusukkut takutinneqareersutut imeqarfimmud pallinguteqqusaannginnermut killiup annertussusaa Ilulissani ineriartornerup naammassinissaanut aalajangiisuusumik piumasaqaataavoq. Killiliussap iluani arlaannik sanaartukkamik pilersitsinissamik periarfissaqanngimmat, taamaattumik aamma mittarfimmud aqqu nutaaq imaaliillaannaq pilersinneqarsinnaanngilaq.

EQQAAVISSUAQ

Taakkua saniasigut eqqaavissuag piviusoq ungasissusissamik piumasaqaatilik Nuugaarsuup eqqaani ineriartortitsinissamik periarfissanik annertuumik killiliivoq. Ineriartortitsinissag ajornassaaq, kisianni atuinissamut periarfissat killeqassapput, ilutigitillugulu inissiiffissap aalajangiuisimassusia piffimmi tassani najugaqarnissamut nakernaallisaataassaaq.

LUFTHAVNSVEJ

Mittarfimmud aqquserngup pilersinnissaa Nuugaarsummi ineriartortitsinissamut periarfissanut pingaarutilimmik piumasaqaataavoq, aqquserngit pioreersut alliliinissami pilersaarutigineqartumi attanneqarsinnaaqullugit. Aqquserngup taassuma aningaasalersornerata ilaa ilaatigut mittarfimmit akilerneqarsinnaavoq, kisianni piffissag pillugu pilersaarummut sanaartoreranullu ilutigitillu sulisut pineqartut akornnganni ilaannakortumik aningaasalersorneqassagunarpoq.

QAARTITERUTAASIVIIT

Mittarfimmud aqqupit pilersaarutigineqartup kangiatuginnguani kommunemi pilersaarummi qaartartuusivissat nutaat pilersaarutigineqarput. Qaartartuusiviit taakkua sillimaniarnikkut killiliussat illoqarfiup ineriartortinnerata periarfissaanik sunniisinnaassapput, kisianni aamma mittarfimmud aqqummut nutaamut. Taamaattumik qaartartuusivinnik takkunanga inissineq imaluunniit ungaluugalersuineq allannortinneqarsinnaavoq, imaasillugu, sillimaniarnikkut killiliussap suliarineqartussanut pilersaarutigisanut kalluarneqanginnissaa

In order to develop the areas north of Ilulissat, there are a number of preconditions that need to be implemented. Some of these include changes in protection zones, land uses and the like, while others include investments in construction works, in particular road construction and other infrastructure.

WATER RESTRICTED ZONE

As described earlier, regulating the extent of the water barrier zone is an essential prerequisite for the implementation of the development of Ilulissat. Therefore, as it is not possible to establish some types of installations within the zone, it will not be immediately possible to establish the new airport road either.

DUMP

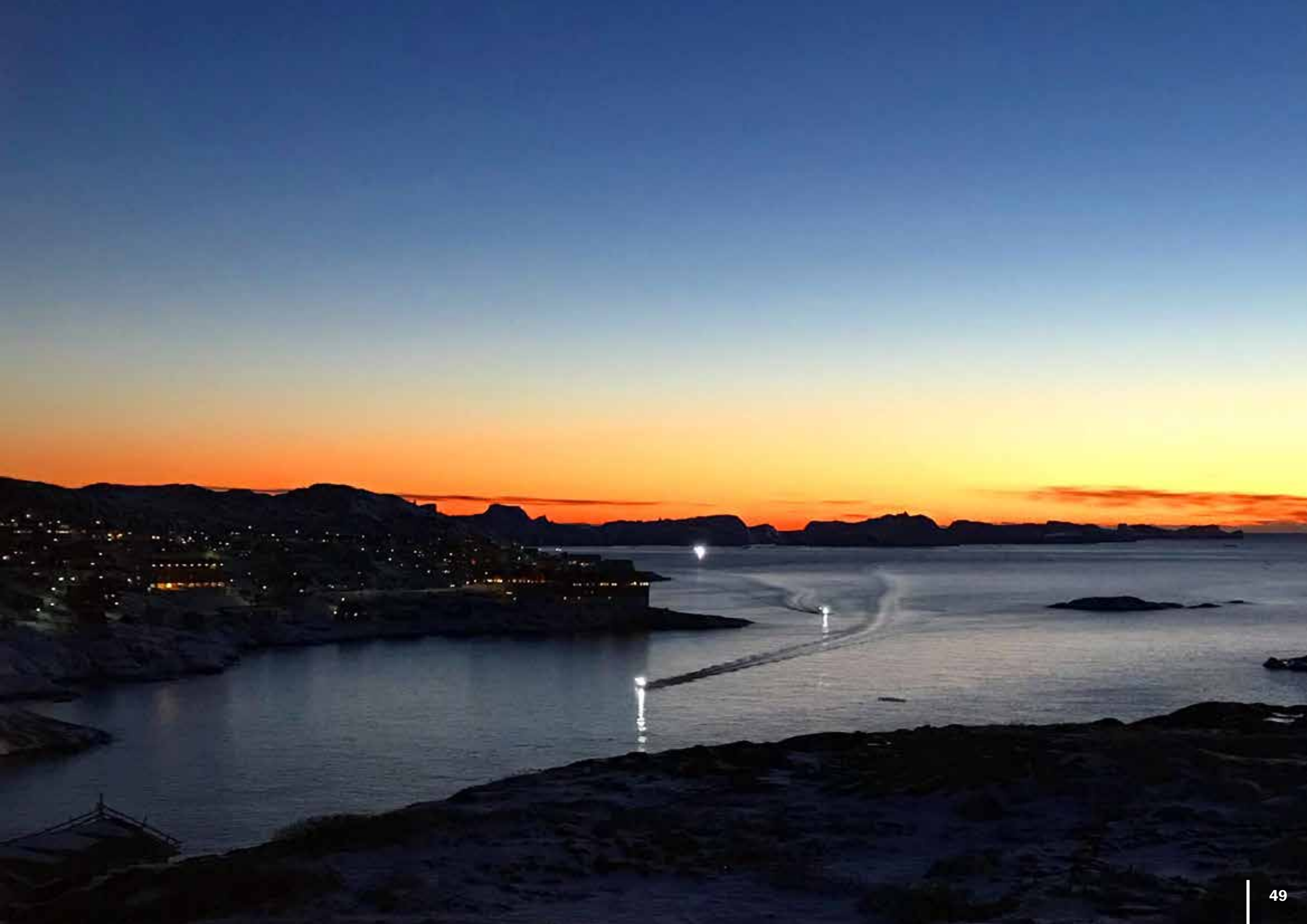
Herudover er den eksisterende dump med tilhørende afstandskrav medvirkende til at reducere udviklingsmulighederne betragteligt i området på Nuugarsuk / Nordre Næs. En udvikling vil ikke være umulig, men anvendelsesmulighederne vil være begrænsede, og samtidig vil en fastholdelse af placeringen kunne medvirke til at reducere attraktionsværdien i at bo i området.

AIRPORT ROAD

The construction of the airport road is an important part of the prerequisites for the development opportunities on Nuugarsuk / Nordre Næs, as the existing road network will not be able to sustain the planned extension. The financing of this road is likely to be partly provided by the airport, but it would be appropriate to coordinate closely the timetable and the rate of expansion between the parties involved.

EXPLOSIVES' DEPOTS

Immediately east of the planned airport road, the municipal plan has laid out new explosives' depots. These depots have safety zones that could affect both urban development opportunities, but also the new airport road. Consideration should therefore be given to whether the location or layout of these depots can be modified so that the demarcation of the safety zones does not affect the planned activities.







TAPILIUSSAT – NUNAMINERTAT NAATSORSRNEQARNERI

Nuugaarsuk / Nordre Næs	Inissiat amerlassusaat / Other houses	Quleriimmi anner-tussuseq (m ² tutinertut) / Total area per floor (m ² foot-print)	Quleriit amerlassusaat / Number of floors	Katillugit quleriit m ² -rii / Total floorage m ²	Inissiat katillugit / Total living space
Inissiaq 1 / Housing 1					
Inissiaq (Sinneruttoq tak. Kommunep pilersaarutaanut ilassut nr.52) / Housing (Residuality cf. Municipal Plan Supplement No. 52)	120		2 og 4	12.000	
Katillugit / Total				12.000	120
Inissiaq 2 / Housing 2					
Inissiaq (Sinneruttoq tak. Kommunep pilersaarutaanut ilassut nr.52) / Housing (Residuality cf. Municipal Plan Supplement No. 52)	10	100	1	1.000	
Katillugit / Total				1.000	10
Inissiaq 3 / Housing 3					
Ilaqtariinnut illussat (80 m ²) / One-family houses (80 m ²)	11	80	1	880	
Ilaqtariinnut illussat (104 m ²) / One-family houses (104 m ²)	20	104	1	2.080	
Eqimasut-pukitsut Inissiaq (á ca. 120 m ²) / Near-low housing (á app. 120 m ²)	28	80	1,5	3.360	
Katillugit / Total				6.320	59
Inissiaq 4 / Housing 4					
Ilaqtariinnut illussat (104 m ²) / One-family houses (104 m ²)	21	104	1	2.184	
Eqimasut-pukitsut Inissiaq (á ca. 120 m ²) / TNear-low housing (á app. 120 m ²)	30	80	1,5	3.600	
Inissiaq quleriik (á ca. 80 m ²) /Multi-storey dwellings (á app. 80 m ²)	123	80	2 og 3	24.500	
Inissiaq (á ca. 85 m ²) /Point house dwellings (á app. 85 m ²)	32	170	4	2.720	
Katillugit / Total				33.004	206
Inissiaq 5 / Housing 5					
Ilaqtariinnut illussat (104 m ²) / One-family houses (104 m ²)	76	104	1	7.904	
Eqimasut-pukitsut Inissiaq (á ca. 120 m ²) - Near-low housing (á app. 120 m ²) - Clusters	53	80	1,5	6.360	
Katillugit / Total				14.264	129

APPENDIX – DETERMINATION OF AREA

Nuugaarsuk / Nordre Næs	Inissiat amerlassusaat / Other houses	Quleriimmi anner-tussuseq (m ² tutinertut) / Total area per floor (m ² footprint)	Quleriit amerlassusaat / Number of floors	Katillugit quleriit m ² -rii / Total floorage m ²	Inissiat katillugit / Total living space
Inissiaq 6 / Housing 6					
Eqimasut-pukitsut Inissiaq (á ca. 120 m ²) / Near-low housing (á app. 120 m ²)	101	80	1,5	12.120	
Katillugit / Total				12.120	101
Inissiaq 7 / Housing 7					
Inissiaq quleriik (á ca. 80 m ²) / Multi-storey dwellings (á app. 80 m ²)	160	80	2 og 3	32.000	
Katillugit / Total				32.000	160
Inissiaq 8 / Housing 8					
Ilaqutariinnut illussat (80 m ²) / One-family homes (80 m ²)	12	80	1	960	
Ilaqutariinnut illussat (104 m ²) / One-family homes (104 m ²)	5	104	1	520	
Eqimasut-pukitsut Inissiaq (á ca. 120 m ²) / Near-low housing (á app. 120 m ²)	53	80	1,5	6.360	
Katillugit / Total				7.840	70
Inissiaq 9 / Housing 9					
Eqimasut-pukitsut Inissiaq (á ca. 120 m ²) / Near-low housing (á app. 120 m ²)	28	80	1,5	3.360	
Inissiaq quleriik (á ca. 80 m ²) / Multi-storey dwellings (á app. 80 m ²)	63	80	2 og 3	12.500	
Katillugit / Total				15.860	91
Inissiaq 10 / Housing 10					
Eqimasut-pukitsut Inissiaq (á ca. 85 m ²) / Near-low housing (á app. 85 m ²) - Clusters	44	3.763	1	3.763	
Inissiaq quleriik (á ca. 80 m ²) / Multi-storey dwellings (á app. 80 m ²)	73	80	2 og 3	14.500	
Ilaqutariinnut illussat (104 m ²) / One-family homes (104 m ²)	10	104	1	1.040	
Katillugit / Total				19.303	127

Nuugaarsuk / Nordre Næs	Inissiat amerlassusaat / Other houses	Quleriimmi anner-tussuseq (m² tutinertut) / Total area per floor (m² footprint)	Quleriit amerlassusaat / Number of floors	Katillugit quleriit m² -rii / Total floorage m²	Inissiat katillugit / Total living space
Inissiaq 11 / Bolig 11					
Ilaqutariinnut illussat (104 m ²) / One-family houses (104 m ²)	12	80	1	960	
Eqimasut-pukitsut Inissiaq (á ca. 120 m ²) / Near-low housing (á app. 120 m ²)	22	80	1,5	2.640	
Katillugit / Total				3.600	34
Center 1 / Centre 1					
Akunnittarfiit / Hotels		808	1	808	
Paaqqinniffiit / Institutions		823	1	823	
Katillugit / Total				1.631	
Center 2 / Centre 2					
Qitiusoqarfiit / Centre Features		610	1	610	
Katillugit / Total				610	
Center 3 / Centre 3					
Timersorneq aamma kulturi / Sport and culture		2.779	1	2.779	
Katillugit / Total				2.779	
Center 4 / Centre 4					
Akunnittarfiit / Hotels		5.126	1	5.126	
Katillugit / Total				5.126	
Center 5 / Centre 5					
Qitiusoqarfiit / Centre Features		2.249	1	2.249	
Katillugit / Total				2.249	
Center 6 / Centre 6					
Qitiusoqarfiit / Centre Features		1.000	1	1.000	
Paaqqinniffiit / Institutions		1.384	1	1.384	
Katillugit / Total				2.384	

Nuugaarsuk / Nordre Næs	Inissiat amerlassusaat / Other houses	Quleriimmi anner-tussuseq (m² tutinertut) / Total area per floor (m² footprint)	Quleriit amerlassusaat / Number of floors	Katillugit quleriit m² -rii / Total floorage m²	Inissiat katillugit / Total living space
Center 7 / Centre 7					
Akunnittarfiit / Hotels		8.007	1	8.007	
Katillugit / Total				8.007	
Center 8 / Centre 8					
Qitiusoqarfiit / Centre Features		922	1	922	
Paaqqinniffiit / Institutions		1.298	1	1.298	
Katillugit / Total				2.220	
Inuussutissarsiorfik 1 / Commerce 1					
Katillugit / Total		19.590	1	19.590	
Inuussutissarsiorfik 2 / Commerce 2					
Katillugit / Total		3.112	1	3.112	
Inuussutissarsiorfik 3 / Commerce 3					
Katillugit / Total		5.231	1	5.231	
Inuussutissarsiorfik 4 / Commerce 4					
Katillugit / Total		2.000	1	2.000	
Inuussutissarsiorfik 5 / Commerce 5					
Katillugit / Total		13.734	1	13.734	
Kisitsisit katillugit / Total				225.984	1.106

Nuugaarsuk / Nordre Næs	Inissiat amerlassusaat / Other houses	Quleriimmi anner-tussuseq (m ² tutinertut) / Total area per floor (m ² footprint)	Quleriit amerlassusaat / Number of floors	Katillugit quleriit m ² -rii / Total floorage m ²	Inissiat katillugit / Total living space
Nunaminertat katillugit atugassatut aggulutat / Total areas by use					
Inissiaq Katillugit / Housing Total				157.311	
Inuussutissarsiorfik Katillugit / Commerce Total				43.667	
Center Katillugit / Centre Total				4.781	
Akunnittarfiit Katillugit / Hotels Total				13.941	
Paaqqinniffiit Katillugit / Institutions Total				3.505	
Oqaatsit kulturilu katillugit / Sport and culture Total				2.779	

Kangerluarsuk / Brede Bugt				Nunaminertat / Areas	
Nunaminertat katillugit atugassatut aggulutat / Total areas by use					
Umiarsualivik / Port	0			131.000 m ²	
Eqqaavissuaq / Dump	0			15.500 m ²	
Katillugit / Total				146.500 m ²	

NASSUIAAT

ILLOQARFIUP INERIARTORNERA ILULISSAT AVANNAA

Pilersaarut akuerineqarpoq 29.marts 2021.

Piginnittussaanerit tamarmik innimigineqassapput. Assiliineq pilersaarussiau suliarineranik ingerlatitseqqiineq tamakkiisumik akuerineqanngikkaluarluni pisinnaavoq.

Pilersaarut www.avannaata.gl -mi aaneqarsinnaavoq

IMPRINT

URBAN DEVELOPMENT - ILULISSAT NORD

The plan was adopted on March 29, 2011.

All rights reserved. copying and redistribution of the plan in its entirety can be done without consent.

The plan can be downloaded at www.avannaata.gl

Suliarineqarpoq / Prepared by



Suleqatigalugit / In cooperation with



